

City of Austin Aquatic Master Plan Community Presentations

June, 2017



Master Plan Purpose

- Develop a planning tool to guide the 20 year vision for Austin's Aquatic System
- Plan for an Equitable and Sustainable aquatic system
- The Master Plan provides:
 - A tool to evaluate the suitability of existing and potential pool sites for current or future aquatic facilities
 - A process to establish sustainability benchmarks to determine the short and long term recommendations for pool operations & facilities
 - A long range plan based upon public engagement and a long term sustainable model
 - Model aquatic amenities and features to meet the current and future needs of Austin residents
 - Recommendations for environmental and fiscal sustainability

Public Engagement - Phases I-III

13,000
Total Participants



27



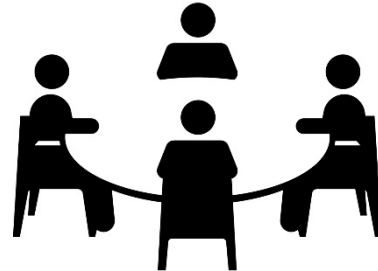
Neighborhood
Sessions

17



Public
Workshops

11



Focus Groups

11



Pool Listening
Sessions

4,606



Completed
Surveys

Current State of Austin Aquatics

\$\$\$\$

To fix existing pools



\$400K

Maintenance expenses exceed budget



>50+

Average age of pools



25-30

Typical useful pool life span



ADA/Health

Codes

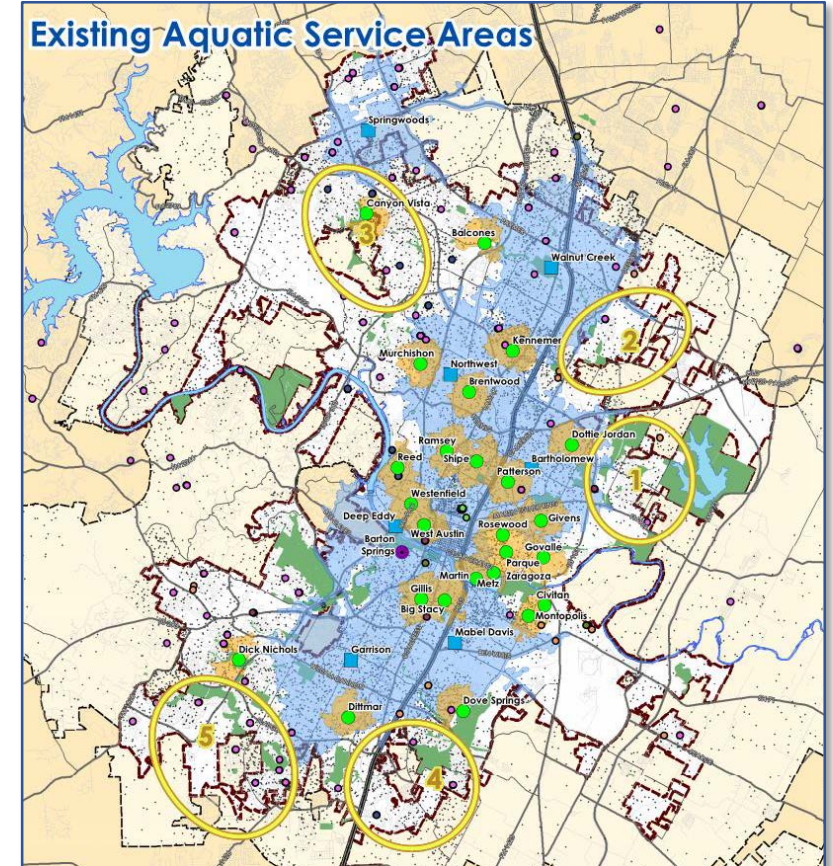


Missing program opportunities



Underserved

Existing Aquatic Service Areas



Proposed Aquatic Facility Classifications

Classification	Service Area	Pool Square Feet Sizes	Features
Neighborhood Pool	20-minute walk 5-minute drive	3,000 – 5,000 S.F. Zero depth entry; 25 m x 6-8 lanes	Recreation and Activity Pools
Community Pool	10-minute drive	5,000 – 7,000 S.F. Zero depth entry; 25 m x 6-8 lanes	Recreation and Activity Pools
Regional Aquatic Center	15-minute drive	7,000 – 12,000 S.F. 25-50 m long x 6-8 lanes	Interactive water play features, party/staff training room, youth fitness, may have 50 m length
Year-Round Basic Indoor Facility	15-minute drive	5,000 – 7,000 S.F. 25 yards x 6-8 lanes	Designed for training, fitness, and program use
Year-Round Premier Indoor Facility	30-minute drive	Over 10,000 S.F. 50 m x 25 yds; Warm water pool; diving well	Designed for optimum training, fitness, competition, and program use

What is a Sustainable System?

- **Facilities**
 - Equitably accessible
 - Within functional life span (25-30 years)
 - Environmentally sustainable and energy efficient
 - Up to current codes/standards
 - Conserves water
- **Budget/Cost**
 - Operate within approved budget
 - Generates revenue to established goals
- **Staffing**
 - Manageable number of staff
 - Comfortable working environment
 - Promotes retainage of institutional knowledge
 - Plans for succession and upward mobility
- **Maintenance/Operations**
 - Clean and safe pool environment
 - Plans and budgets for scheduled equipment maintenance and replacement
 - Centralized maintenance and storage
 - Standardizes pool equipment
 - Computerized, remote monitoring
 - Minimizes unexpected major repairs
- **Programming**
 - Facilities conducive to programs
 - Indoor year-round pools for training and programming
 - Partnerships to promote water safety, programs, and to enhance outreach
 - Instills a value of aquatics to future generations

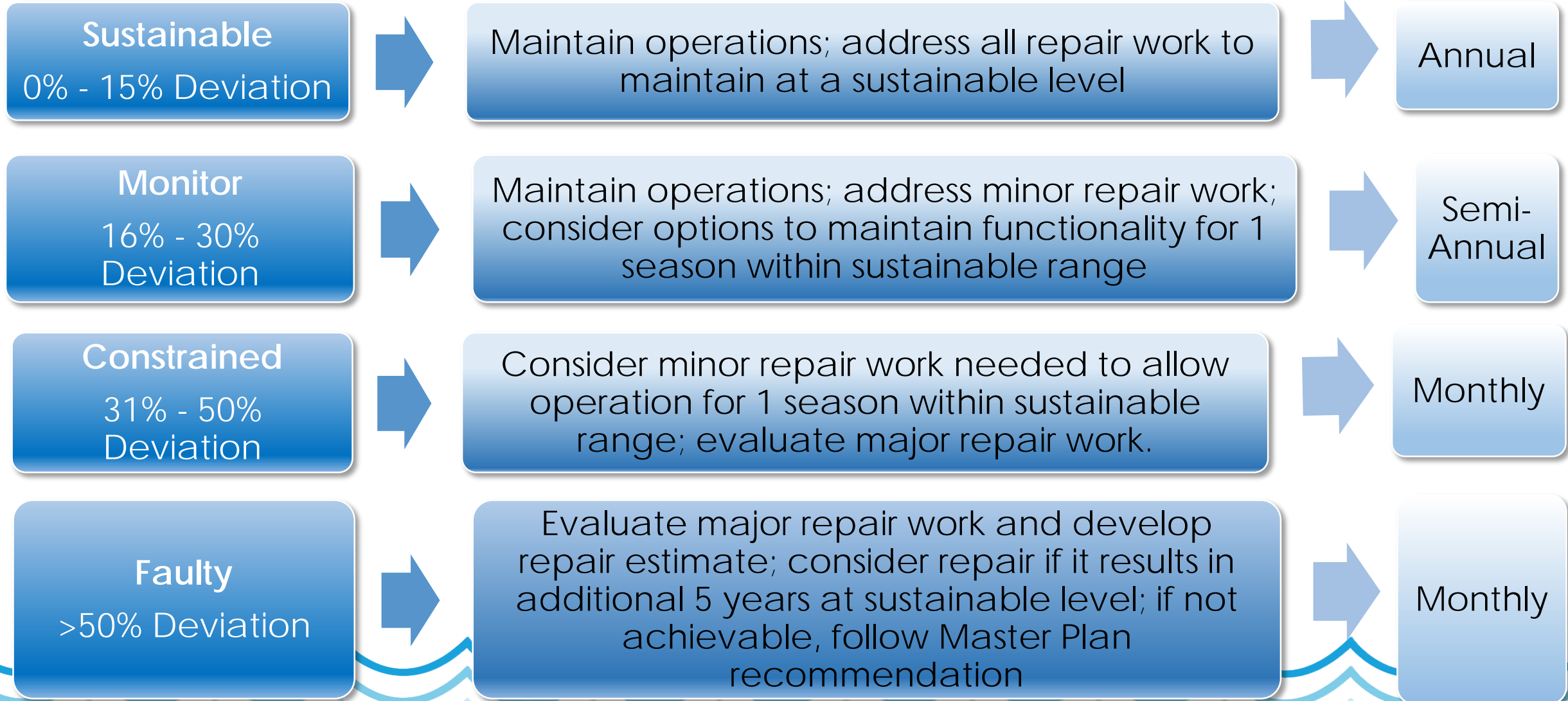
Aquatic Facility Sustainability

Classification

% Deviation Above Baseline

Recommended Action

Evaluation Period

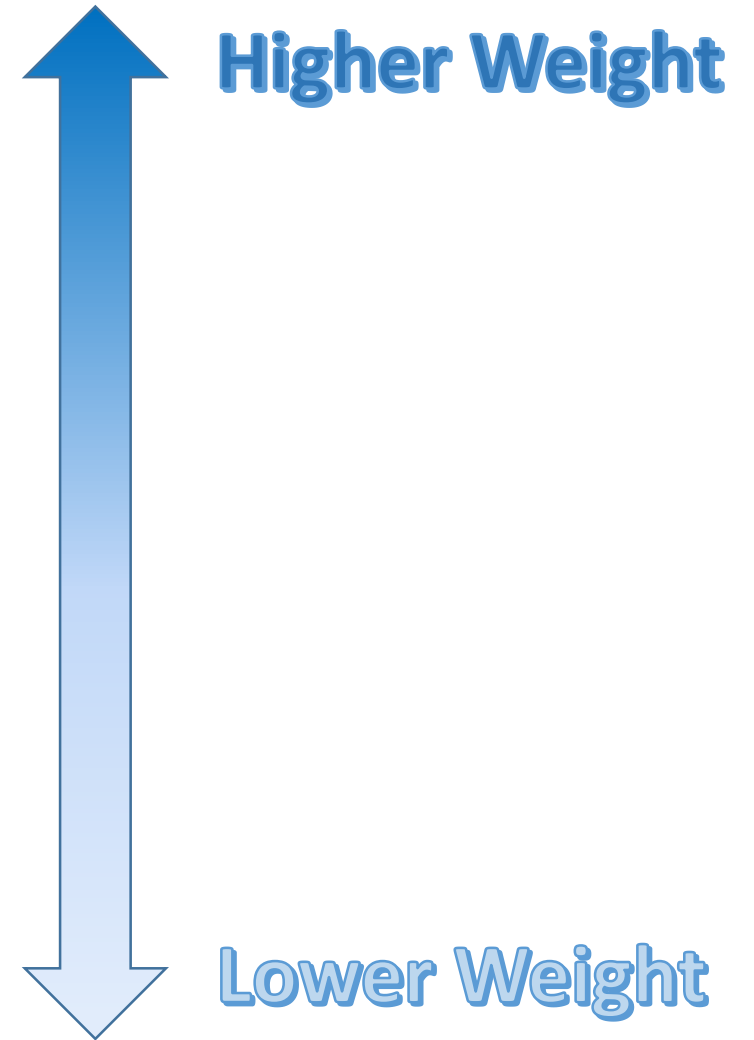


Process for Determining Site Suitability

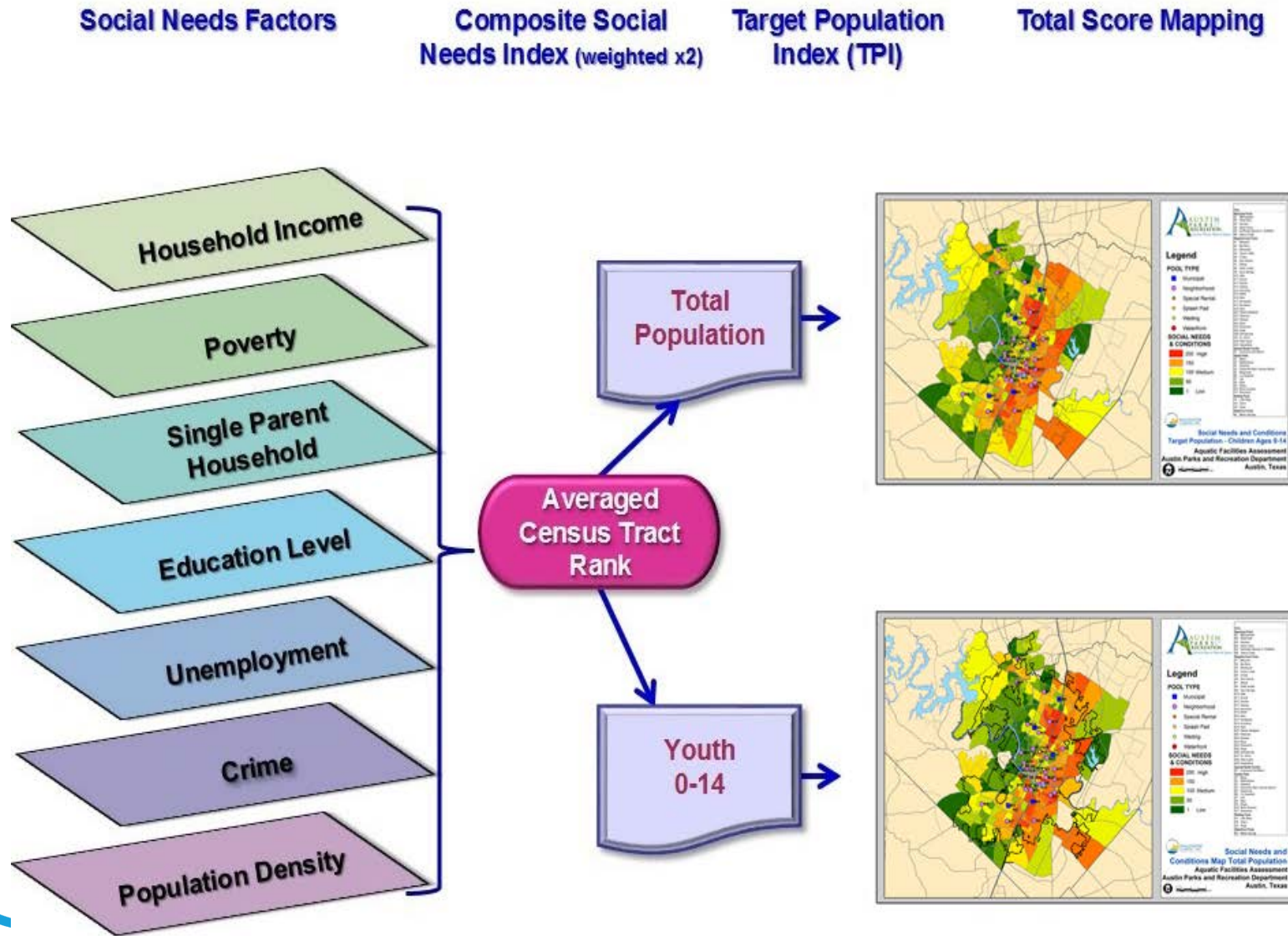
- Establish a **methodology** to rank the **suitability** of:
 1. existing aquatic facilities;
 2. potential sites for development;
 3. renovation, expansion, consolidation, maintaining, or decommissioning (closure) of aquatic facilities.
- Will be used as a **guide** regarding future decision making policies on status of aquatic facilities

Suitability Ranking Categories

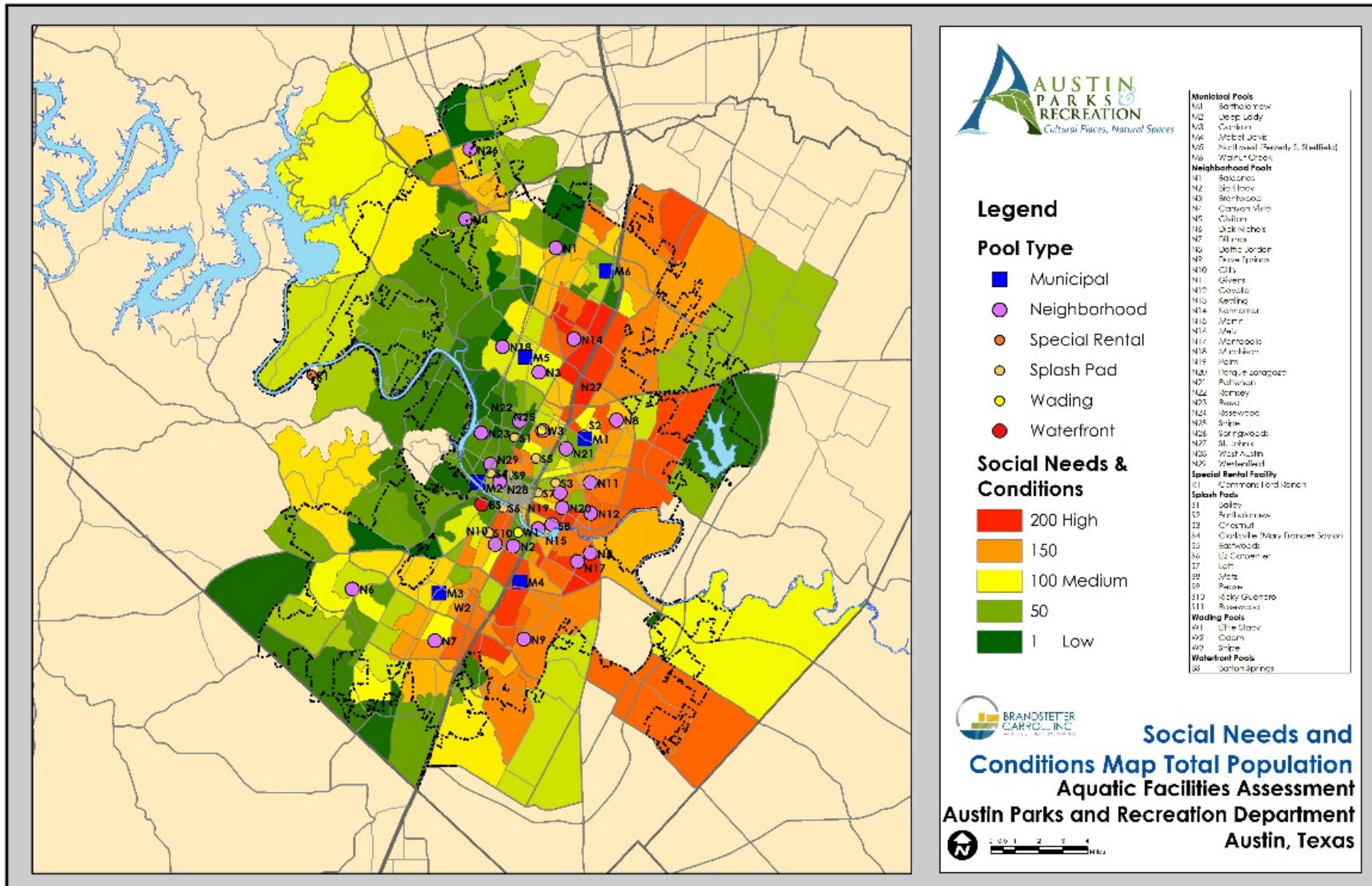
- **Demographics** (14 Elements)
- **Site** (7 Elements)
- **Location** (11 Elements)
- **Accessibility** (9 Elements)
- **Infrastructure** (9 Elements)
- **Environmental** (11 Elements)
- **Regulatory** (12 Elements)
- **Operations** (5 Elements)



Social Needs and Conditions Index



Social Needs and Conditions Index



Ranking Example

Aquatic Facility Site		Givens
Criteria	Facility Potential	
SITE SUITABILITY RATING SCORE	Neighborhood	64
	Community or Regional	61
RANKING AS AN UPDATED OR EXPANDED POOL ²	Neighborhood	11
	Community	9
	Regional	8

Score out of 100 – Range 42-81

Score out of 100 – Range 49-71

Ranking of 34 sites

Ranking out of 18 sites

Ranking out of 9 sites

Score – A higher number = more suitable for renovation, redevelopment or expansion.

Rank – Rank compared to the others, with 1 being the highest/best

Steps to Completion

Draft Master Plan -

- Complete Recommendations that include:
 - A. Methods to achieve a more sustainable system
 - B. Capital cost projections and implementation plan
 - C. Pool classification based upon ranking system and analysis of the criteria elements
 - D. Maintenance and Operations recommendations
 - E. Program Recommendations
 - F. System of various sizes of facilities to serve Austin

Final Public Input on Process and Preliminary Recommendations -

- Public Meetings (June)
- Revision to the Draft Master Plan
- Final Master Plan (June 2017)