



Oertli Neighborhood Park Concept Development

Image from Pearl Retreat Drive, showing Historical Marker

Virtual Community Meeting #1

March 17, 2021
Meeting is being recorded

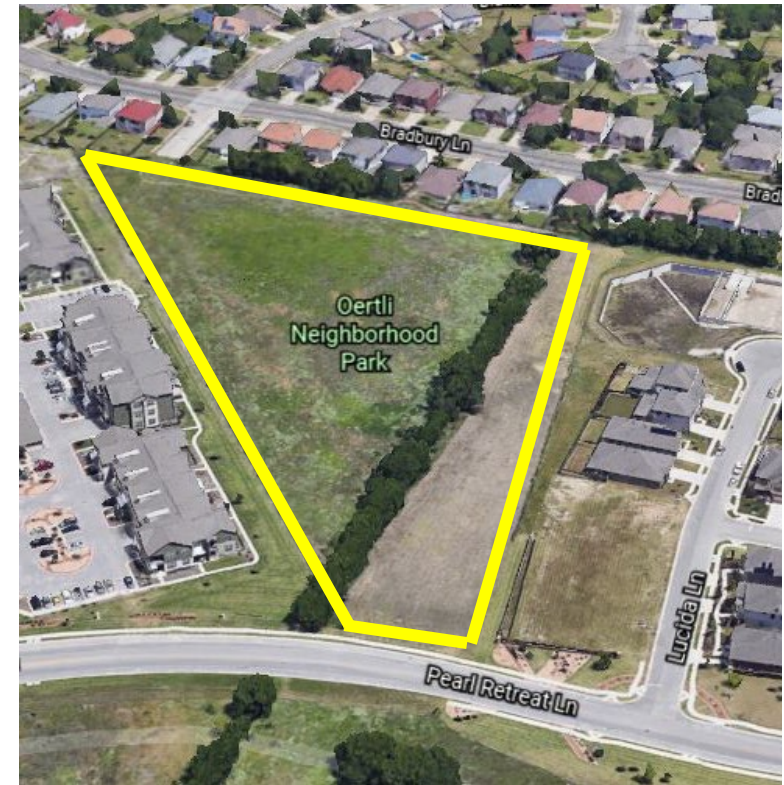


Virtual Info: Zoom Housekeeping

- Participants can join by computer and/or phone
- This session is being recorded and will be posted at the conclusion.
- Participants will stay muted through presentation.
- Questions can be shared in the Comments section.
 - A short period for responses is available for clarifications, then a longer question time at the end of the presentation.
- “Raise hand” for sharing comments during questions session at end of presentation.

Agenda

- Welcome and Introduction
- Meeting Overview: Virtual Meeting Info and Agenda
- Project Team introduction
- Park Information: History of the Park, Classification, Location
- Project Timeline
- Pause for Clarifying Questions
- Existing Conditions of Project Site
- Park Overlay Comparisons of Nearby Parks
- Guided Questions
- Next Steps
- Questions and Comments



Introductions: Meeting Team



Merritt Nolte-Roth, PARD Community Services Coordinator



James Wheeler, PARD Parks Development, Project Coordinator



David Cazares, MWM DesignGroup, Project Design Consultant

Introductions: Primary Contact

Primary Contact

James Wheeler, PLA

Landscape Architect II

James.wheeler@austintexas.gov



Project Design Consultant

MWM DesignGroup



Project information provided at

<https://www.austintexas.gov/OertliPark>



History of the Park

- The Oertli family owned and operated dairy farms from 1923-2001.
- The Oertli Dairy was Travis County's last dairy farm, closing its doors in 2001.
- A 6-acre portion of the Oertli Family property was dedicated to parkland in 2013.
- Due to its size and adjacency to residential housing, Oertli Park is designated as a Neighborhood Park.



Image of Dairy cattle courtesy of Texas A&M University
<https://pathtotheplate.tamu.edu/youth/food/dairy/>

Park Classification: Neighborhood Park

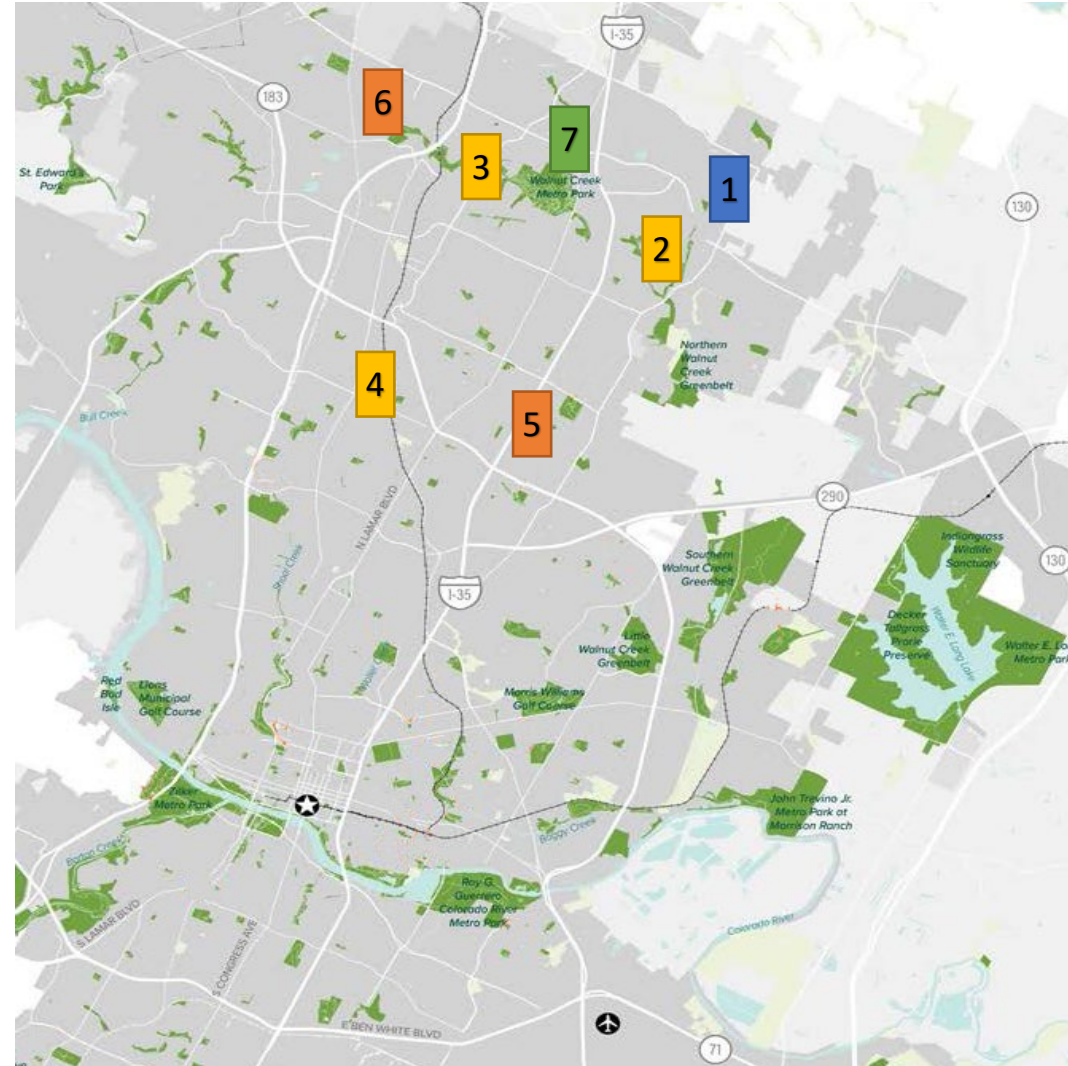
| Classification | Size (acres) | Service Area | Access | Description | Features Mix |
|---------------------|--------------|--------------|---|---|--|
| Metropolitan | 201+ | Citywide | | Typically located in the center of a single neighborhood or in conjunctions with an elementary school or a greenbelt. Local Recreation focus. | Compact Multi-Purpose Outdoor Athletics, Trails, Picnic Areas, Gardens, Playscapes, Nature Play, Passive Users |
| District | 31-200 | 2 miles | | | |
| Neighborhood | 2-30 | 1 mile | Collector streets (bike and pedestrian) | | |
| Pocket | Under 2 | 1/4 mile | | | |
| Button | .25 or less | 1/4 mile | | | |

- **Site Specific Limitations**

- Neighborhood parks do not typically include parking lots, unless property connects to high-use trails. Due to shape and street access, a parking lot is not included in this concept plan.
- A 2009 Zoning Ordinance restricts outdoor sport complexes and prohibits sport courts, including but not limited to tennis and basketball courts. PARD may consider initiating an amendment process if there is extraordinary support for it from the community. (This can be over a year long process)

Project Location and Nearby Parks

- 1 - Oertli Neighborhood Park
- 2 - Copperfield Neighborhood Park
- 3 - Gracywoods Neighborhood Park
- 4 - Wooten Neighborhood Park
- 5 - Gustavo 'Gus' L. Garcia District Park
- 6 - Balcones District Park
- 7 - Walnut Creek Metropolitan Park



Project Timeline

Design



Permitting and Construction

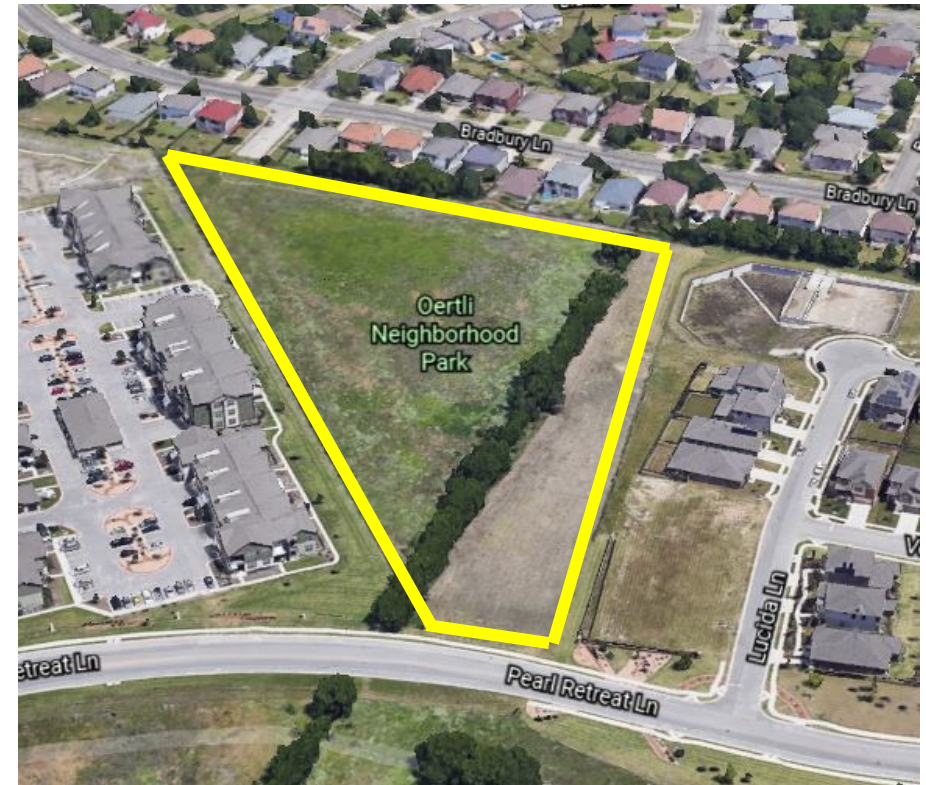


Anticipated Park Opening - Winter 2022 /2023



Pause for Q&A from Chat

- 2 minutes to address questions for clarification
- Additional questions or comments that we don't get to now can be asked at the end of meeting or by emailing the project contact.



Existing Conditions



A. SITE PHOTO



B. SITE PHOTO



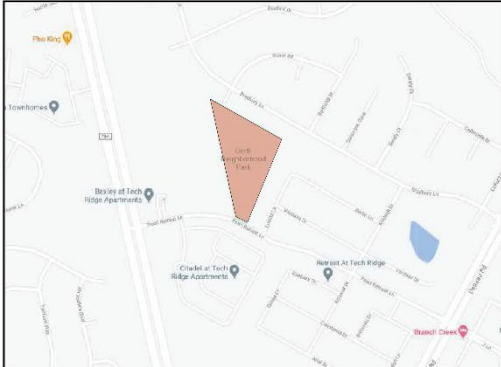
C. SITE PHOTO



D. SITE PHOTO



E. SITE PHOTO



OERTLI PARK LOCATION MAP

Park Overlay Comparison Copperfield Neighborhood Park



A. PAVILION



B. PLAYGROUND



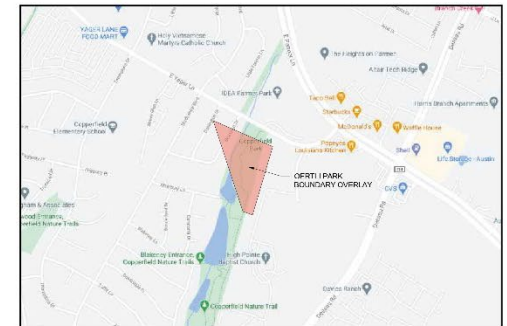
C. PICNIC AREA



D. GRANITE TRAIL



E. WILDFLOWER MEADOW



COPPERFIELD PARK LOCATION MAP
(BOUNDARY OVERLAY IS ROTATED TO INCLUDE THE
MAXIMUM NUMBER OF SITE ELEMENTS)

Park Overlay Comparison

Gracywoods Neighborhood Park



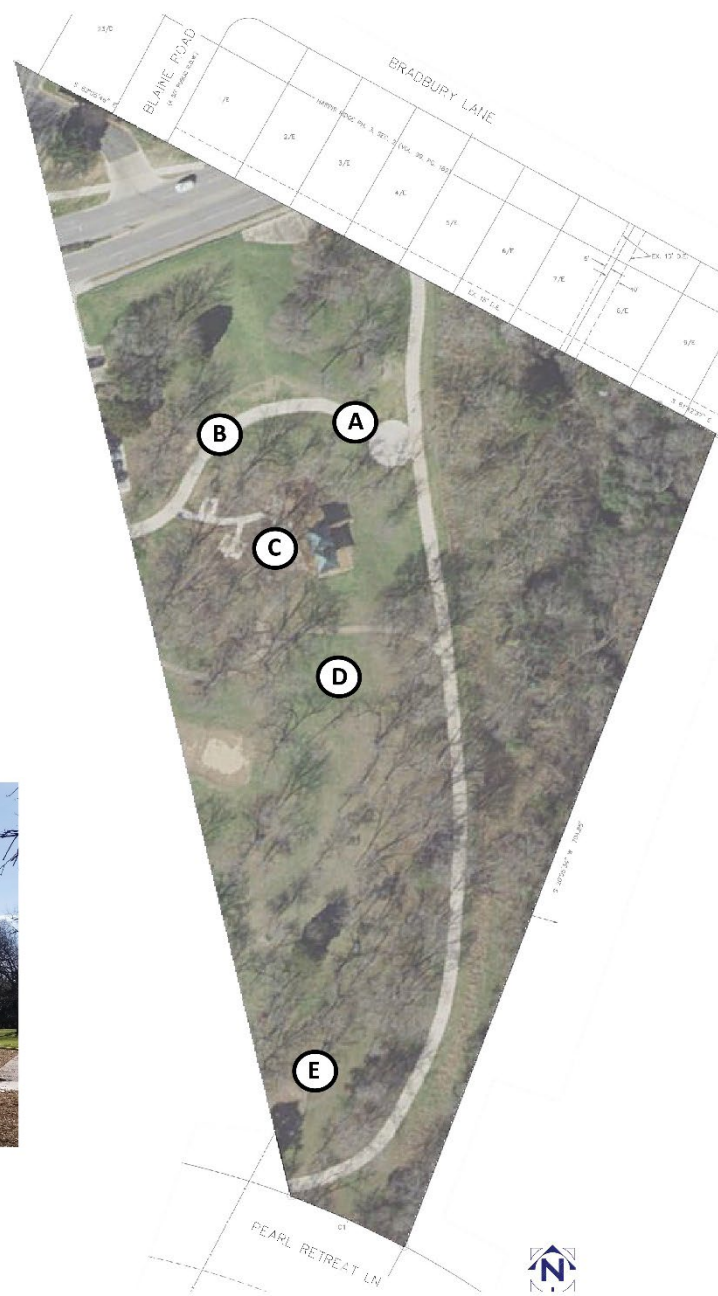
A. GATEWAY SIDEWALK



B. CONCRETE TRAIL



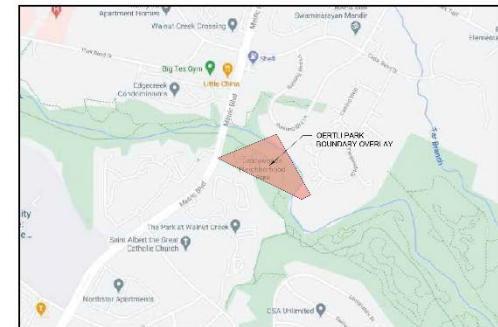
C. PLAYGROUND



D. MULTI-USE AREA



E. PICNIC AREA



GRACYWOODS PARK LOCATION MAP
(BOUNDARY OVERLAY IS ROTATED TO INCLUDE THE MAXIMUM NUMBER OF SITE ELEMENTS)

Park Overlay Comparison Wooten Neighborhood Park



A. COVERED PICNIC AREA



B. PLAYGROUND



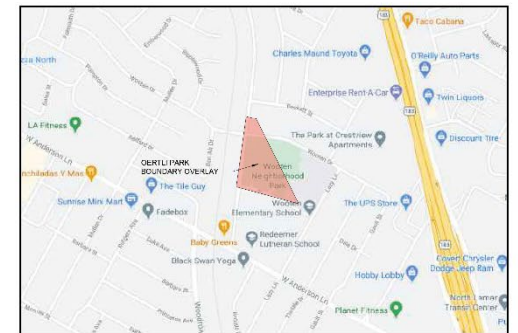
C. GRANITE TRAILS



D. SANDBOX



E. OPEN PLAY



WOOTEN PARK LOCATION MAP
(BOUNDARY OVERLAY IS ROTATED TO INCLUDE THE MAXIMUM NUMBER OF SITE ELEMENTS)

Now we want to hear from you!



Monarch and dandelions, Oertli Park July, 2020

Community Preference Exercise

- What word would you use to describe the community around Oertli Neighborhood Park?
- Which are your preferred playground styles? (select 2)
- What is your preferred shade structure type?
- What amenities do you prefer for Oertli Park? (select 2)
- What activities do you prefer for Oertli Park? (select 2)
- What other ideas for amenities or activities should we explore?

When Questions are activated, respond at [PollEv.com/austinparks512](https://www.poll-ev.com/austinparks512), or Text **AUSTINPARKS512** to **22333** once to join



Preferred Playground Styles



A. Traditional Platform Playground



B. Nature Themed Playground



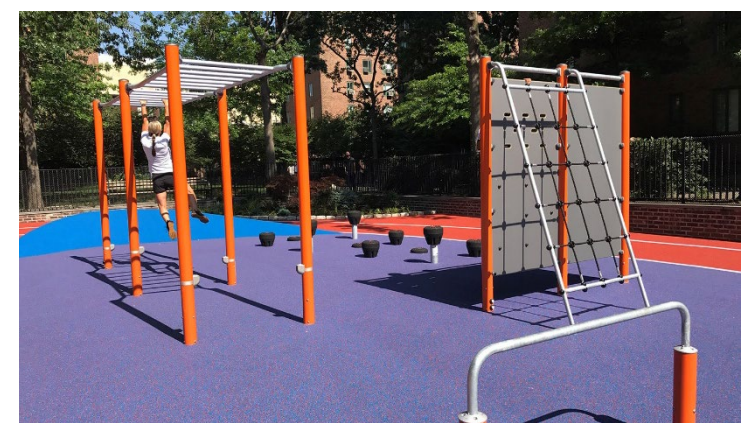
C. Tower and Climber Style Playground



D. Inclusive Playground Style with Ramps



E. Nature based playground



F. Fitness Style Playground

Preferred Shade Styles



A. Shade sails



B. Pavilion



C. Pergola

Preferred Amenities



A. Grill Areas



B. Event Plaza



C. Picnic Areas



D. Community Garden



E. Wildflower Meadow



F. Butterfly Garden



When Questions are activated, respond at [Pollevo.com/austinparks512](https://www.pollevo.com/austinparks512), or Text **AUSTINPARKS512** to **22333** once to join

Preferred Activities



A. Open Field Play



B. Rock Climbing Wall



C. Skate Park



D. Outdoor Table Games



E. Workout Equipment



F. Petanque/Bocce Ball



When Questions are activated, respond at [PollEv.com/austinparks512](https://www.pollevo.com/austinparks512), or Text **AUSTINPARKS512** to **22333** once to join

PollEverywhere

Pollev.com/austinparks512, or

Text **AUSTINPARKS512** to **22333**

Next Steps

Share with others

- Can provide additional feedback and view a recording of tonight's meeting by visiting the Parks and Recreation Departments project webpage:
- <https://www.austintexas.gov/OertliPark>

More information

- Survey: PublicInput.com/OertliPark (open now through April 4, 2021)
- Encuesta en español: PublicInput.com/oertli-espanol

Community Meeting #2: Spring/Summer 2021



Questions & Comments

Project Contact
James Wheeler, PLA
james.wheeler@austintexas.gov



Survey in English: PublicInput.com/OertliPark
en espanol: PublicInput.com/oertli-espanol