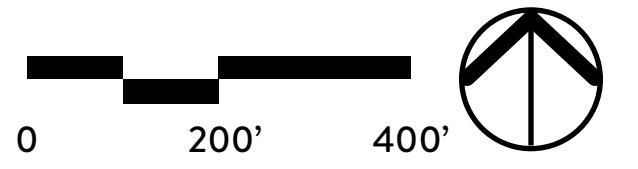
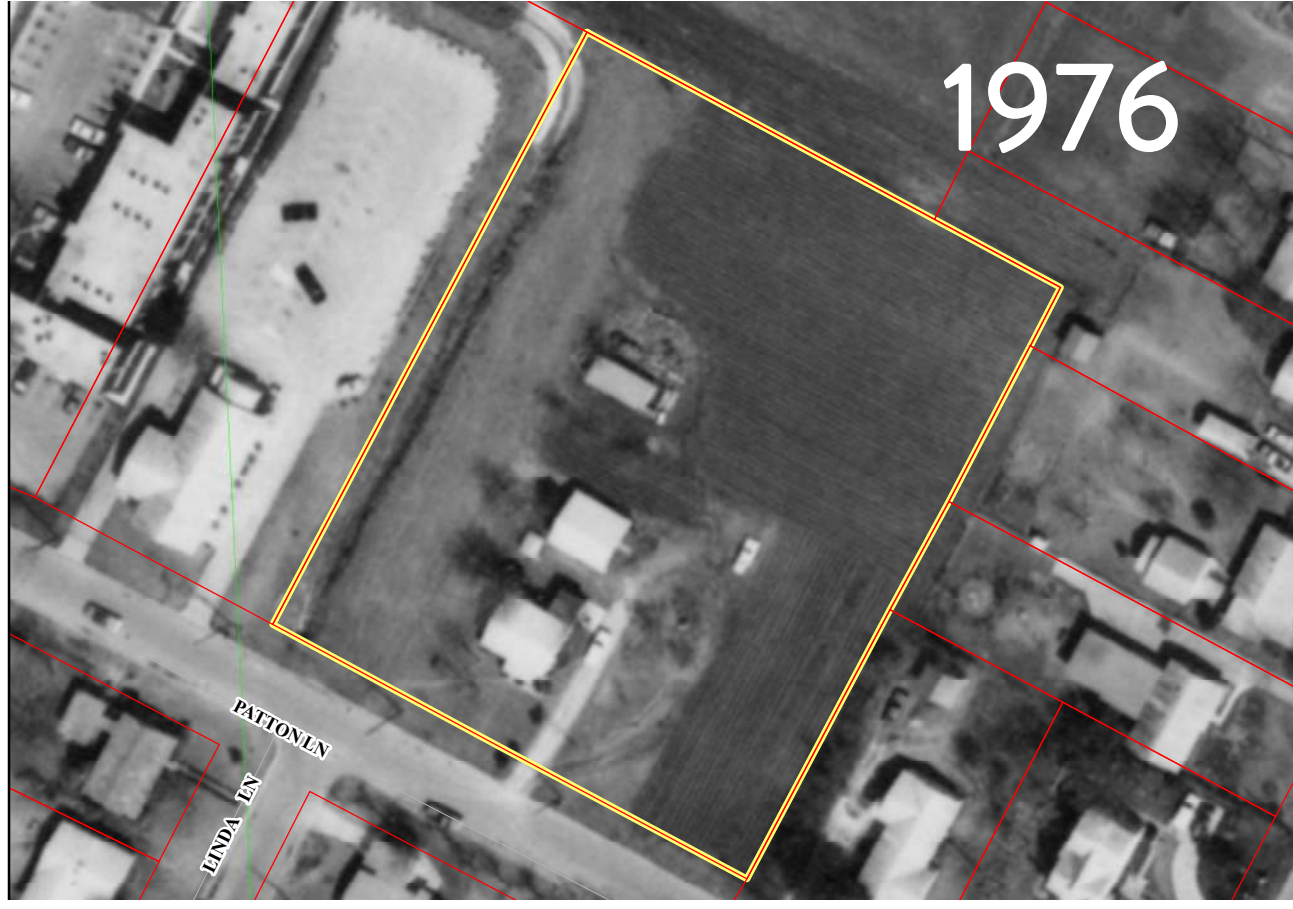
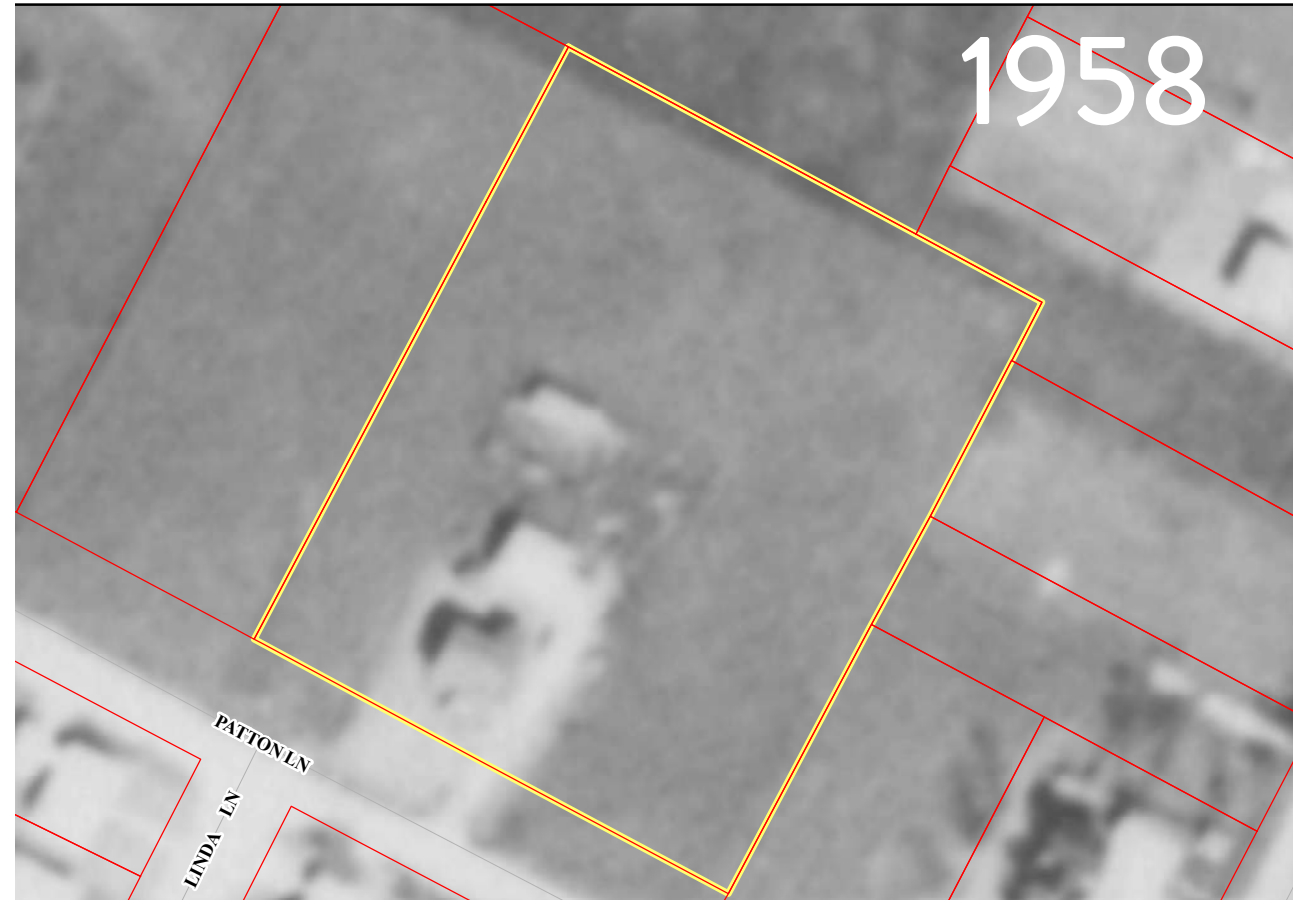
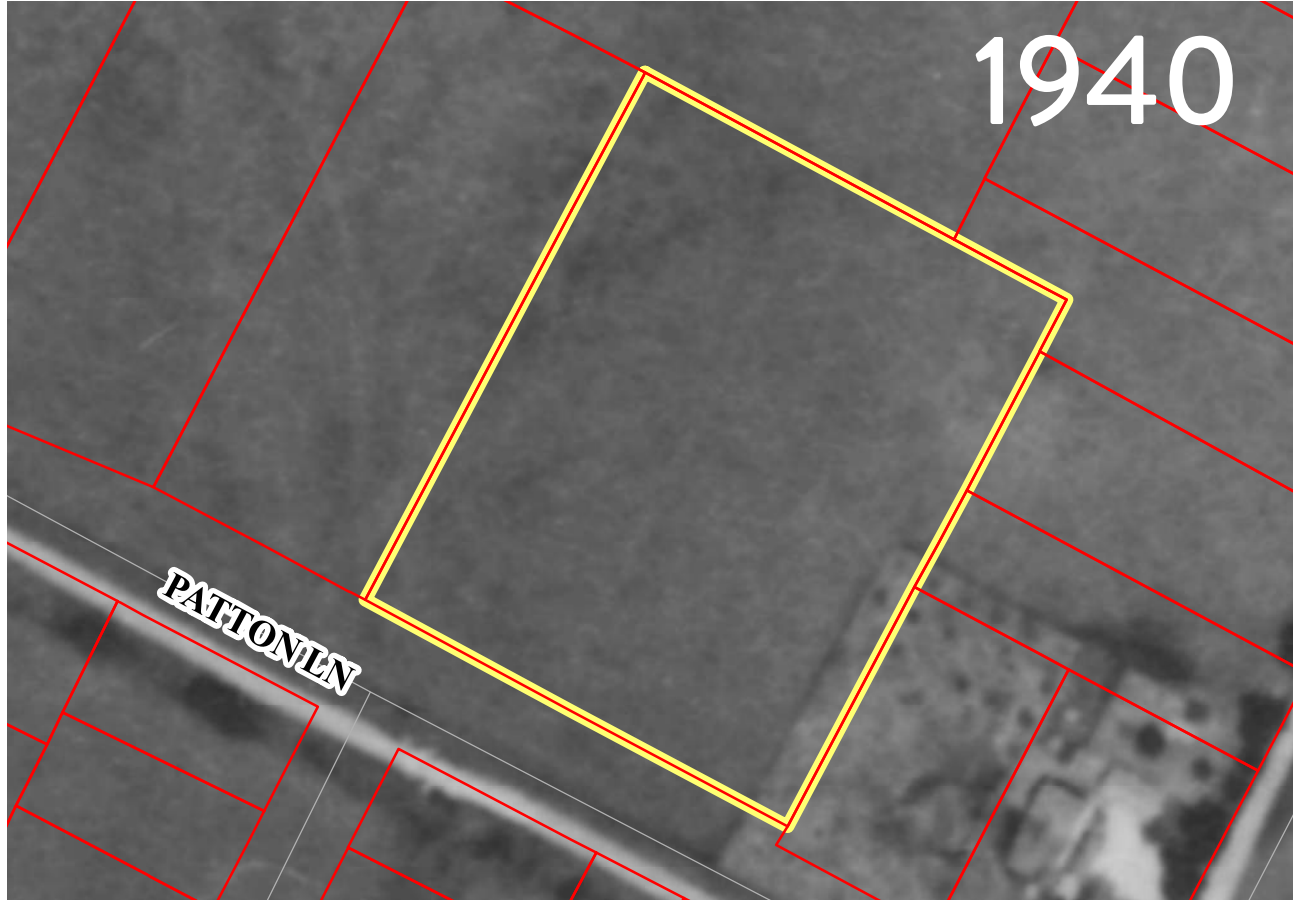


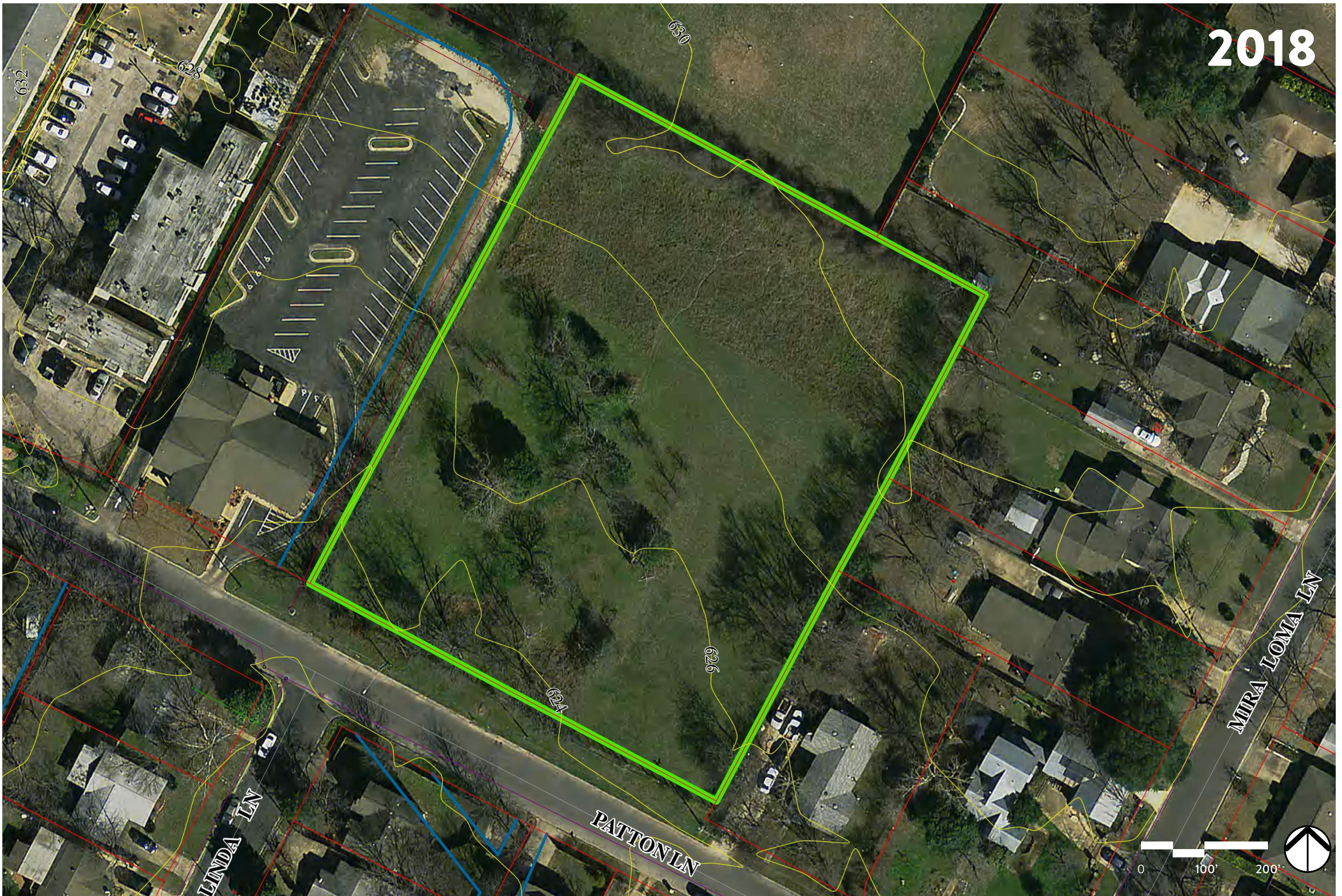


EARL J. POMERLEAU POCKET PARK

Over the years



Address: 1906 Patton Lane
Acreage: 2 ac.
Park Designation: Pocket Park





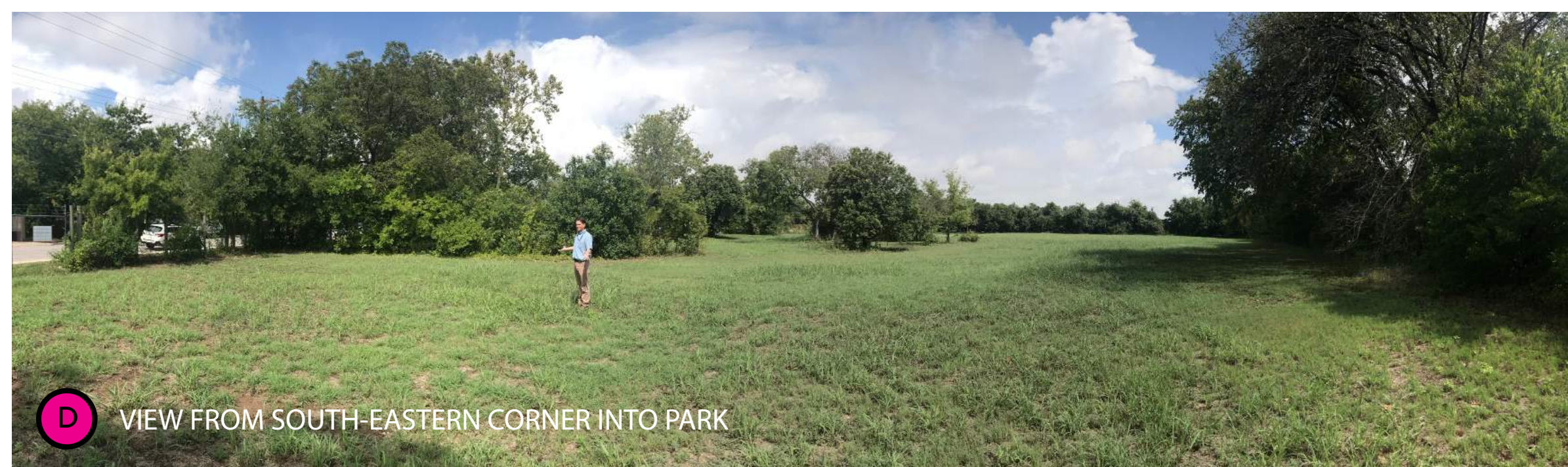
A VIEW FROM SOUTH-WESTERN CORNER INTO PARK



B VIEW FROM MAIN ENTRY GATE INTO PARK



C VIEW FROM MIDDLE OF PARK-LOOKING NORTH



D VIEW FROM SOUTH-EASTERN CORNER INTO PARK



E VIEW FROM NORTHEASTERN CORNER OF PARK LOOKING ACROSS PARK

OBSERVATIONS:

- Wildflowers present
- Good site drainage, no visible low spots
- Fully enclosed by fence and vegetative buffer
- Visibility issues throughout park
- Two existing entry points
- Many invasive species and dead trees on site

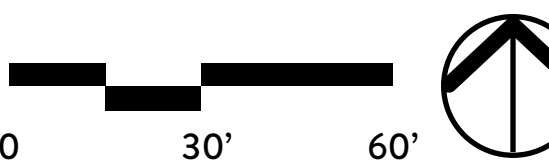


ANALYSIS:

- With good positive drainage, park lends itself to many potential uses.
- Clearing underbrush, limbing up healthy trees and removal of invasive species will provide better visibility and safety from street and within park.
- Layout of park amenities should take advantage of many large shade trees



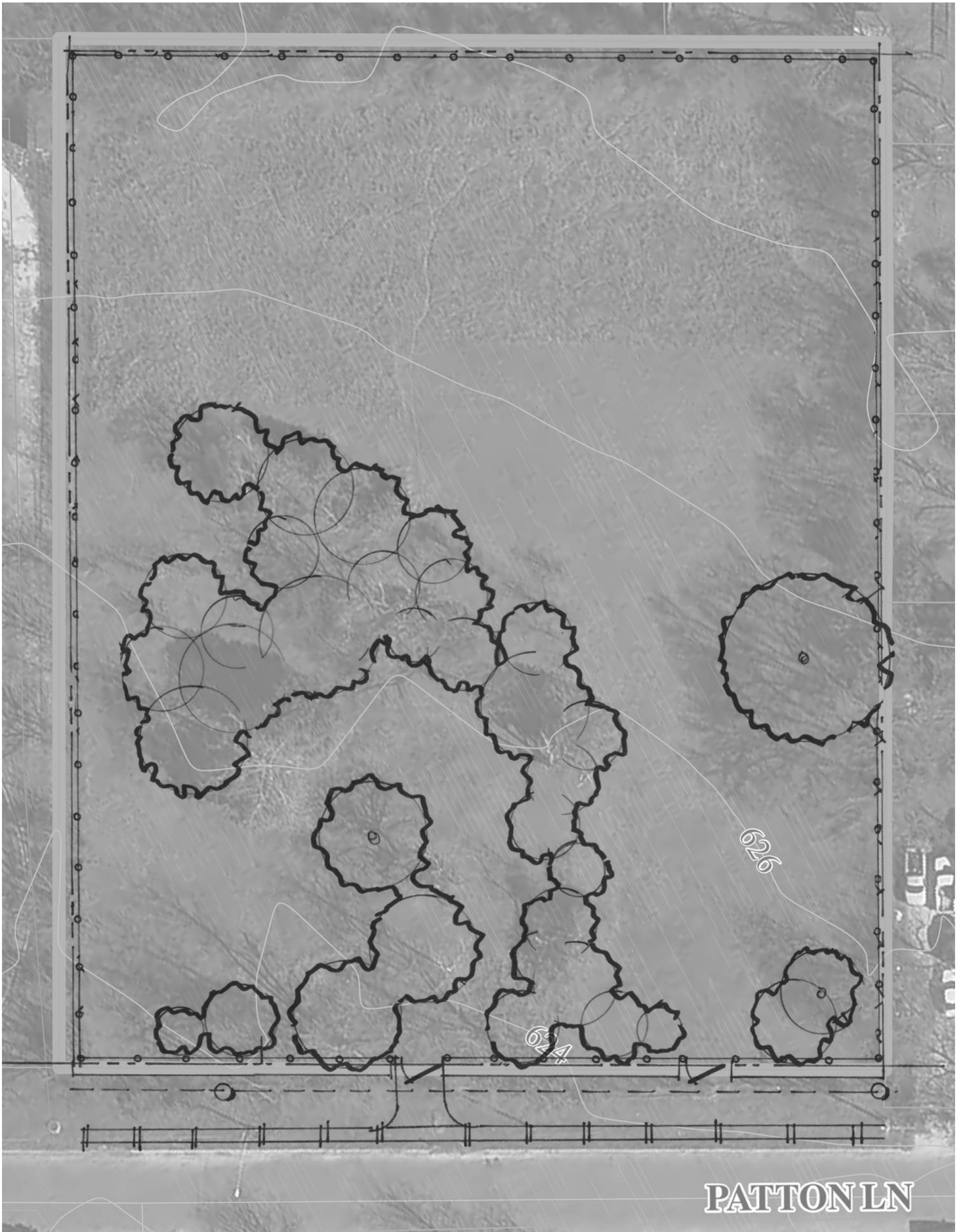
EARL J. POMERLEAU POCKET PARK
Site Analysis and Observations



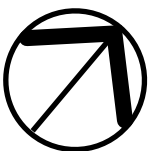


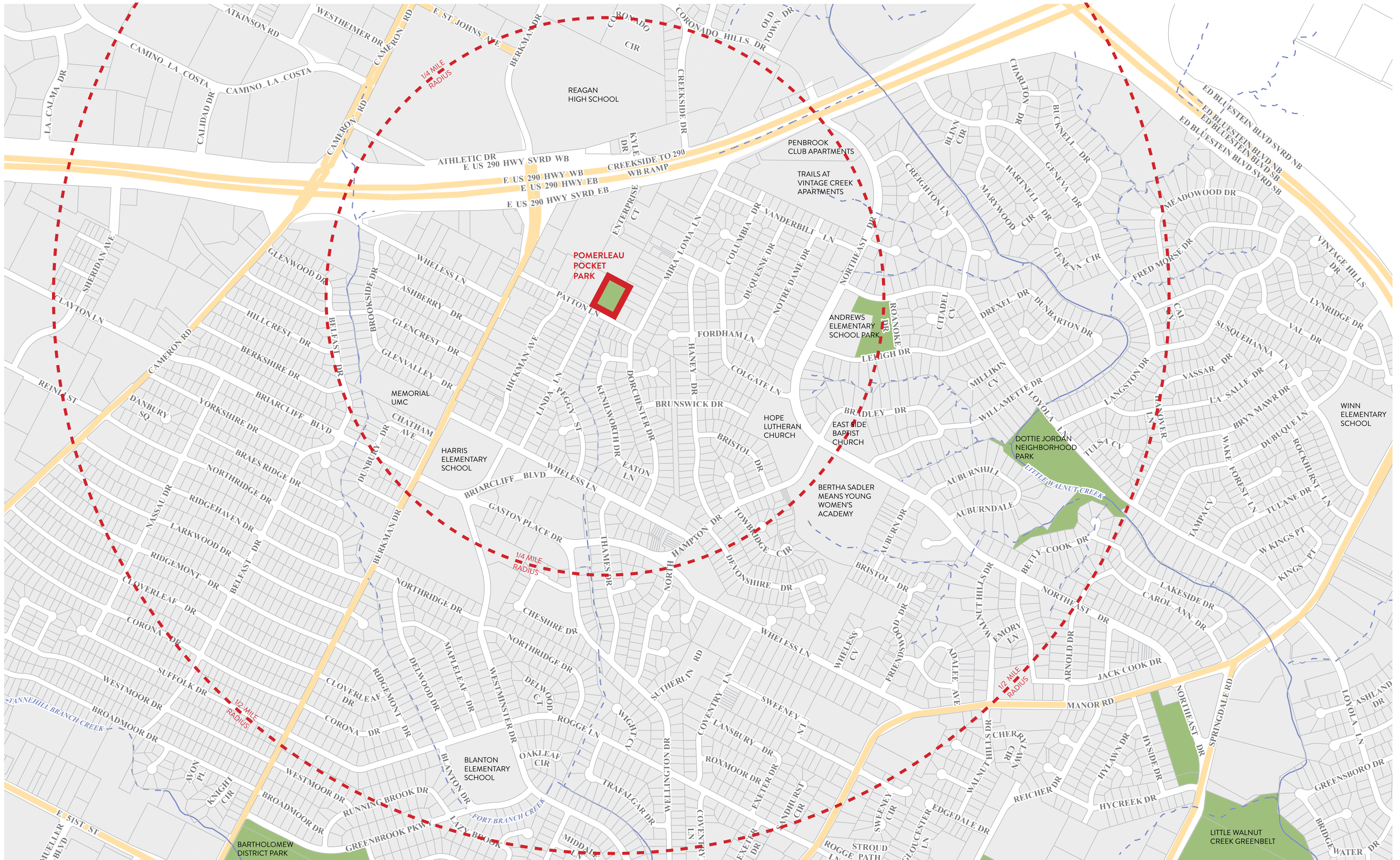
EARL J. POMERLEAU POCKET PARK

Design your park



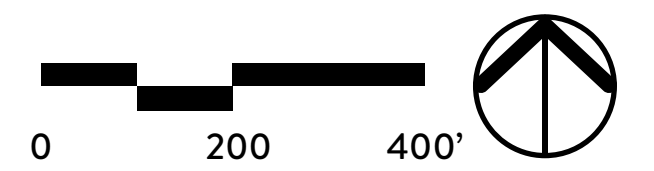
COMMENTS / DEJA TUS COMENTARIOS:





EARL J. POMERLEAU POCKET PARK

Map your location



Pomerleau Park Timeline

Earl J Pomerleau's Legacy 1922-2002

City of Austin Purchases Land Fall 2013

Neighbor Cesar Benavides brought the land to the attention of Austin City Council when it was for sale by Mr. Pomerleau's daughter, Malena Pomerleau-Peterson, who agreed to sell to City of Austin on the condition that the park be named for her father.



Watercolor Mapping Fall 2017

In September WPNA President Meghan Dougherty works with Austin Atlas for a mapping and tree identification watercoloring workshop at Pomerleau Park. This is the first public activity hosted in the park since its purchase!
Jesse Neumann, from PARD Urban Forestry, attends to help with tree identification. Attended by about 20 neighbors. Begin visioning exercises to gather input for the park.



It's My Park Day Spring 2018

In preparation for this volunteer day event, Jesse Neumann and PARD Urban Forestry raise the canopy into the park and clear more downed limbs.

On March 3rd thirty volunteers turn out to help their new park, a big turning point for the project! We hold our first formal visioning exercise for the park and received many varied, thoughtful suggestions, creating a community feeling for the park and its potential. Other projects that day include: build a small crushed granite semicircle to define an entrance into the park, mulch large pecan tree and several other trees. Volunteers prune, weed, and fertilize roses that remain along the fence from the Pomerleau's garden.

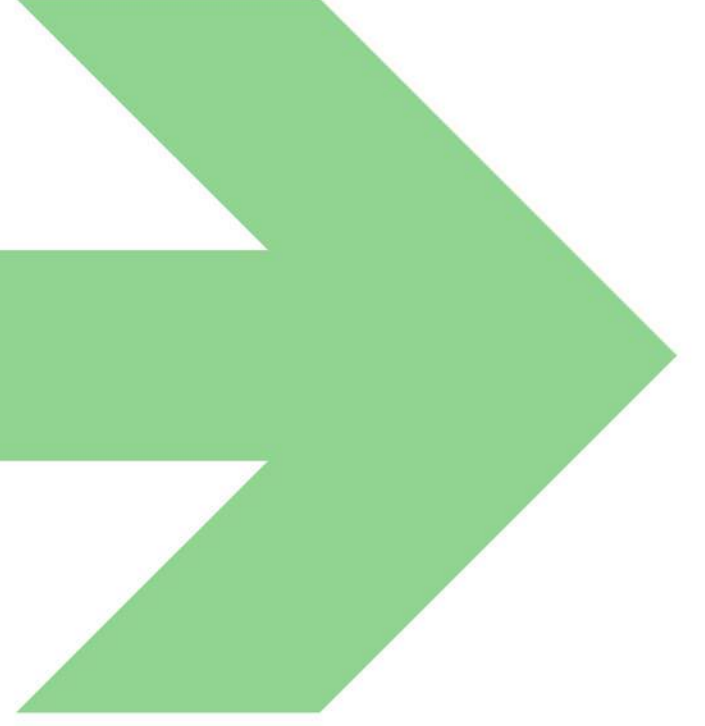


WPNA Awarded Neighborhood Austin Parks Foundation Grant Fall 2018

Neighbor Kyle Girtten works to get WPNA awarded the APF Neighborhood Grant, allowing for the park space to be treated for invasive species. Texas Conservation Corps and American Youthworks will clear invasives in mid-October. High on the list is the poison ivy that has kept volunteers out of the park over recent months.

Public Input Meeting Series

Meeting 1: September 2018
Meeting 2: December 2018
Meeting 3: February 2019



Windsor Park Neighborhood Association Begins Park Activation Spring 2017

WPNA Parks Committee Chair and neighbor Jeanette Swenson begins to strategize with Austin Parks and Recreation about how to activate the park for public use. She makes a call for action with the neighborhood association and kicks off all current work. In May of 2017, the WPNA votes to adopt Pomerleau Pocket Park.



It's My Park Day Fall 2017

November 4, 2017: Citywide *It's My Park Day* event sponsored by Austin Parks Foundation. Jesse Neumann and Amanda Hancock from PARD Urban Forestry cleared deadwood and raised the canopy to make park a safe work space. Volunteers cleared the fence line to provide a line of sight into the park.



WPNA Awarded Austin Parks Foundation Design Service Park Master Planning Process Begins

A huge leap forward! The WPNA Parks Committee embark on a journey with landscape architects Katie Robillard from Austin Parks Foundation and Charles Mabry from the Austin Parks and Recreation Department to design the Master Plan for Pomerleau. This artifact will ensure we get public input, fundraise and build in a phased process with the city's approval, all while keeping a shared vision for the community.



Coming soon...!

It's My Park Day Saturday November 3, 2018 1906 Patton Lane

Join us at Pomerleau Pocket Park for a day of volunteering and get to know the park! Activity to include mulching of newly liberated native trees and sowing wildflowers.

