

Wildland-Urban Interface

WUI Code

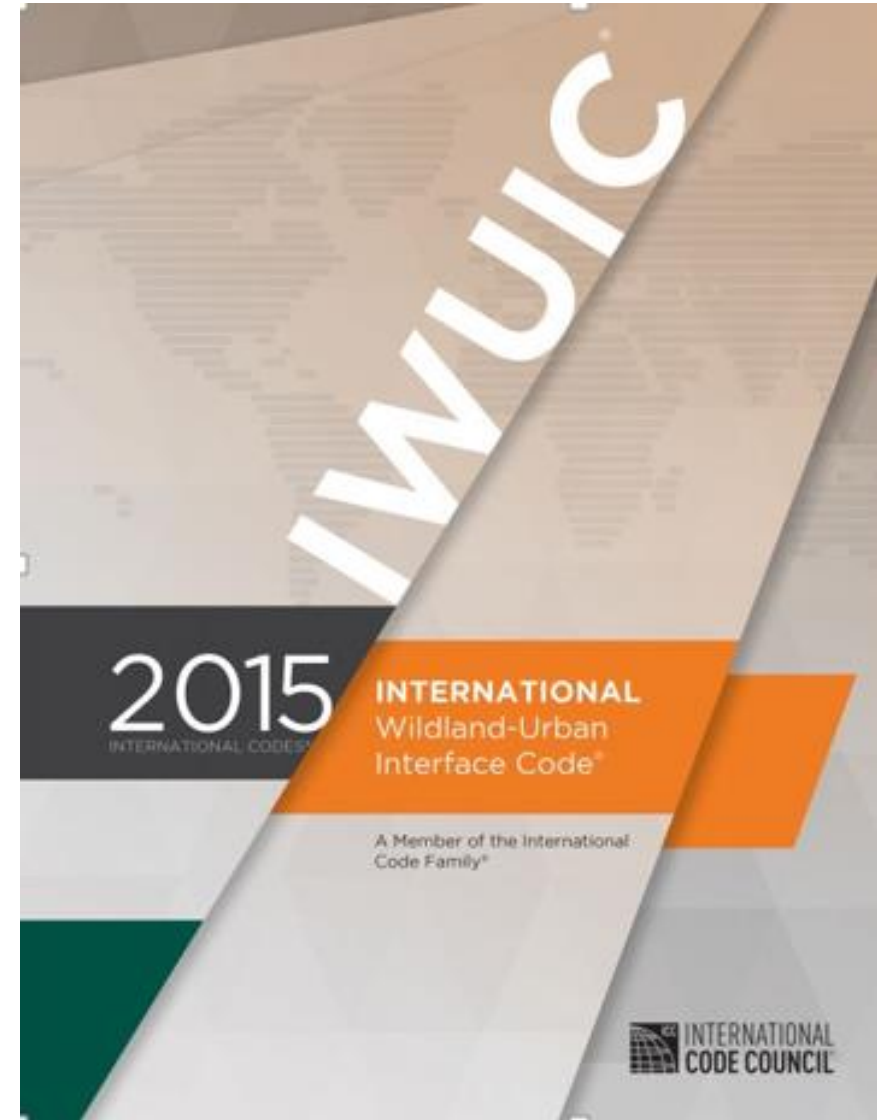
Mark Baker, Wildland-Urban Interface Coordinator



WUI Code

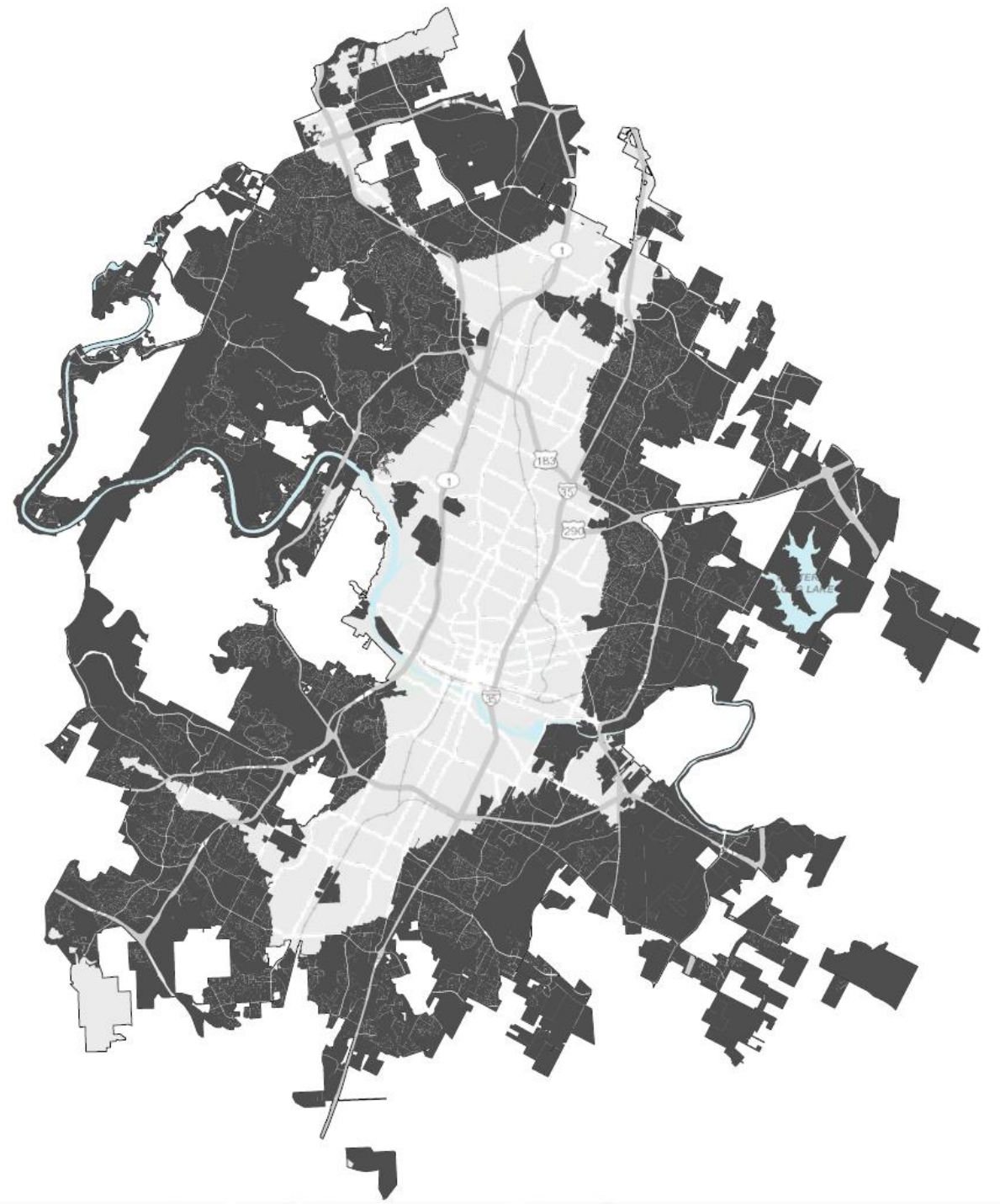
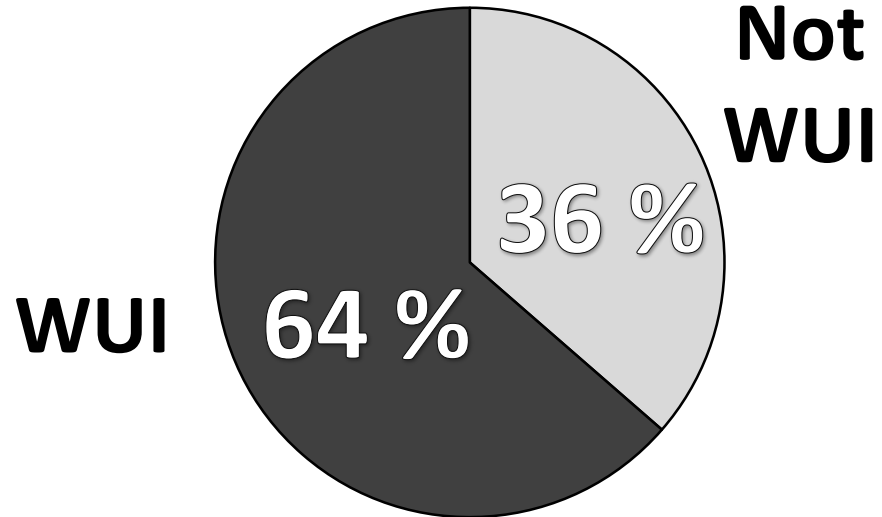
Proposed new building code for Austin

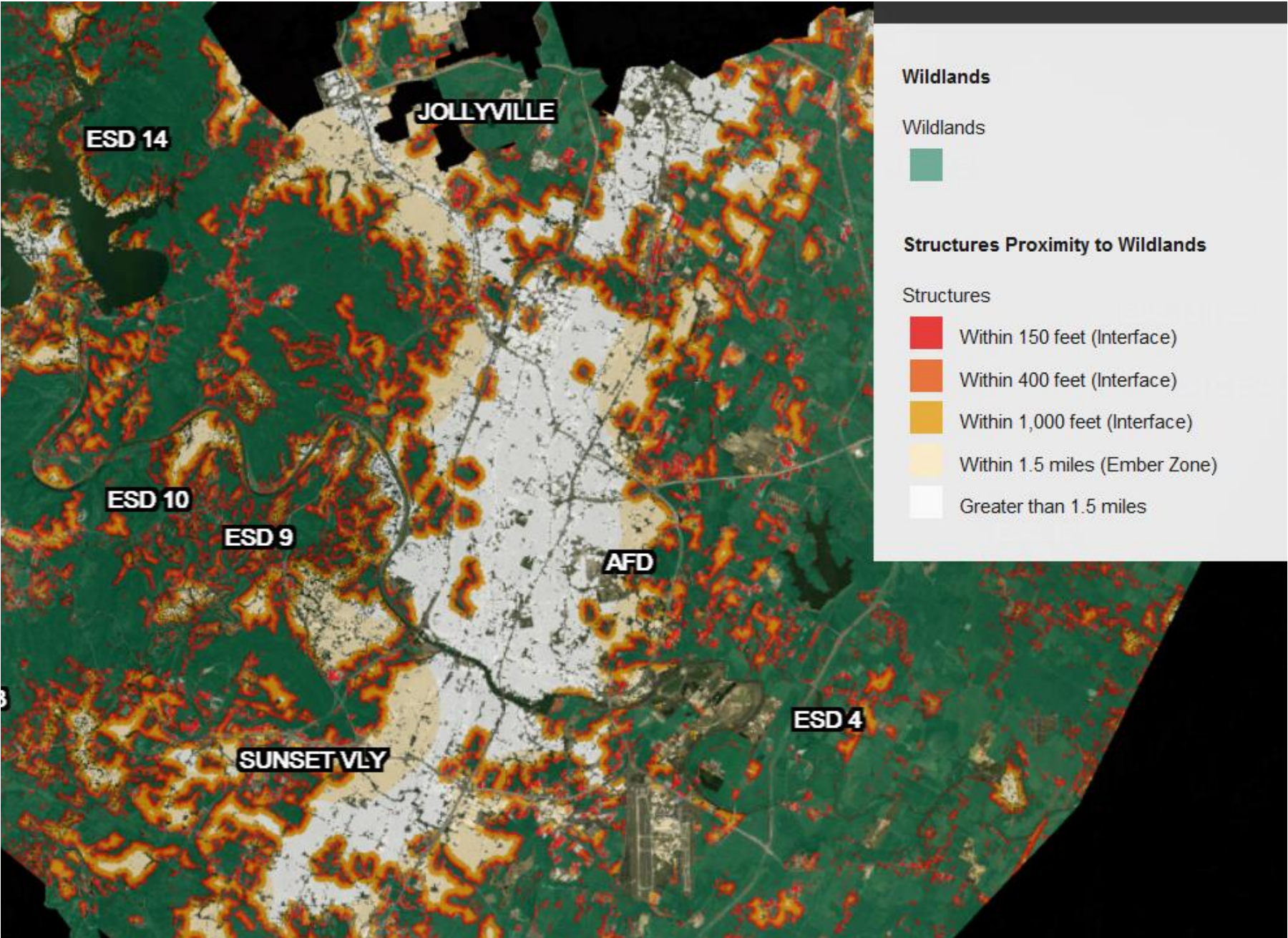
- Fire Marshall Authority
- Structure Hardening – new and significant remodel
- Defensible Space – new and existing structures



WUI Areas

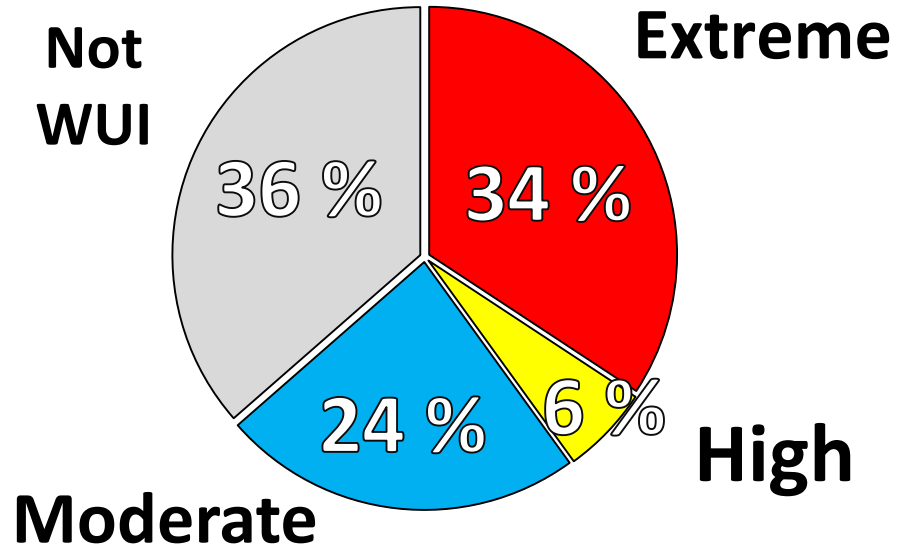
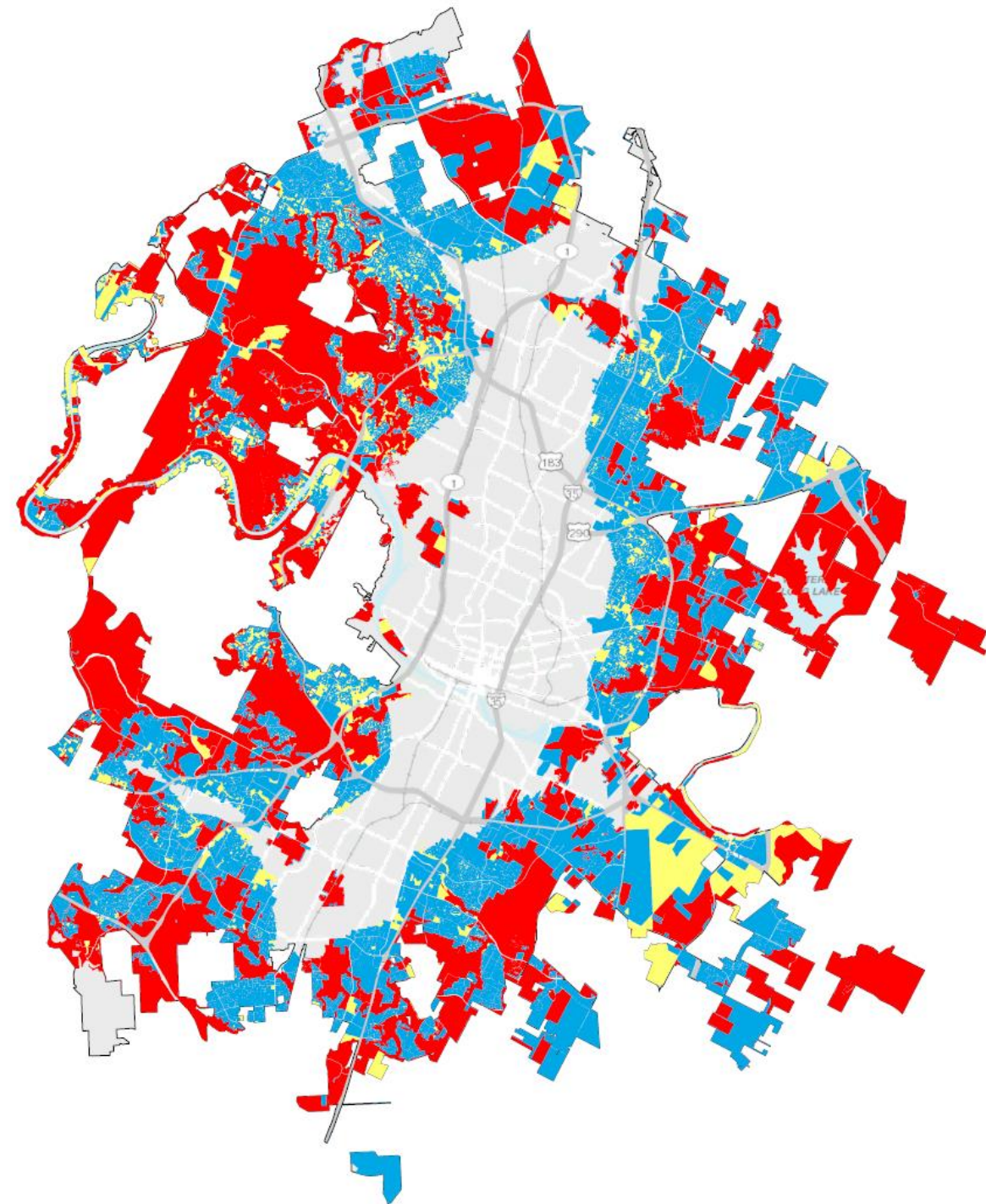
City of Austin Zoning Jurisdiction
Full and Limited Purpose





WUI Hazard Severity

Fuel Model ^b	Proximity to 40 Acres Wildland Areas					
	150' to 1.5 miles			< 150'		
	Slope (%)					
	< 10	10 to 25	> 25	< 10	10 to 25	> 25
Light	M	M	M	M	M	H
Medium	M	M	H	E	E	E
Heavy	H	H	H	E	E	E



WUI Code Defensible Space

Area treated to reduce the rate of spread and intensity of an advancing wildfire and create space for fire suppression operations

Based on hazard severity

- Moderate - 30 feet
- High - 50 feet
- Extreme - 100 feet



WUI Code Defensible Space

Fuel generally refers to vegetation but includes structures and appendages; decks and fencing.

Fuel modification reducing or altering the fuel load

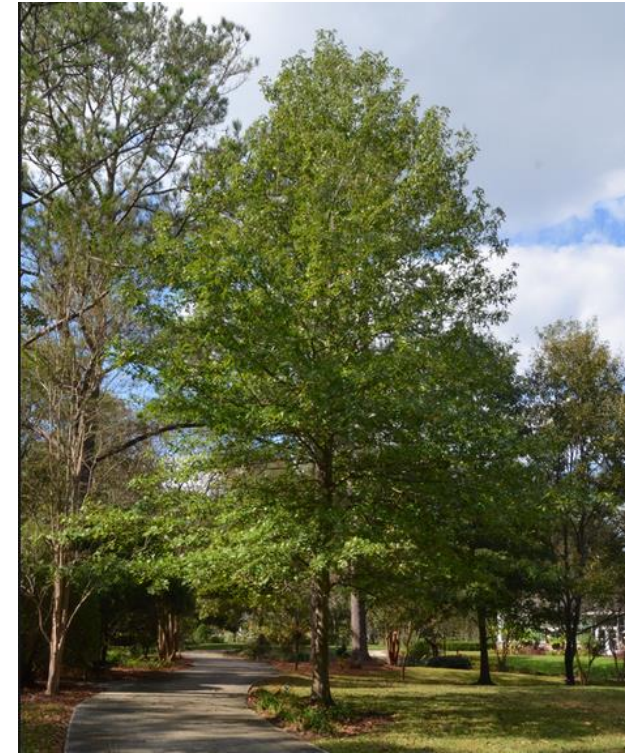
Fire-resistive vegetation plants burn at low intensity, with a slow rate of spread and short flame lengths.



Fire Resistive Vegetation

High fire resistive - deciduous trees and shrubs, succulents, high moisture content plants – Oaks, Elms, many cactuses and palms, many annuals

Low fire resistive - resinous, dense foliage trees and shrubs – junipers, hollies, rosemary, cured tall grasses



WUI Code Defensible Space

Trees and vegetation allowed if do not provide a means of transmitting fire from wildland fuels to structures

Maintain clear of structures, remove debris from roofs and gutters, raise tree canopies to provide vertical separation

Technical criteria to be provided



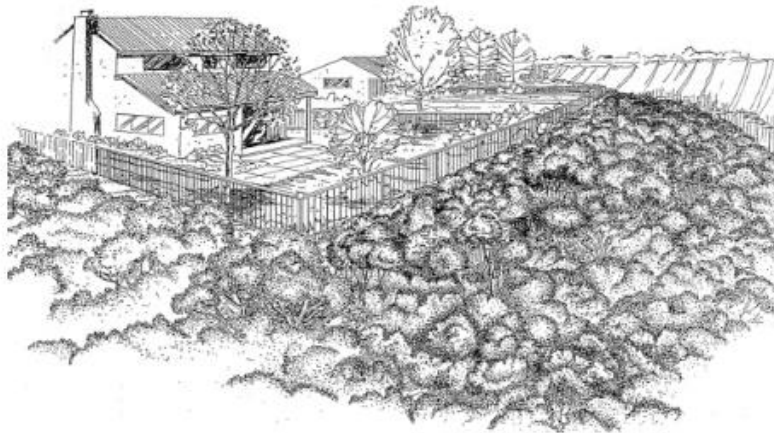
San Diego Example



Chaparral Plant Before Pruning



Chaparral Plant After Pruning



Before Brush Management



After Thinning and Pruning

Ignition Resistant Construction

Defensible Space	Hazard Severity					
	Moderate		High		Extreme	
	Water Supply					
	Conforming	Non-Conforming	Conforming	Non-Conforming	Conforming	Non-Conforming
Non-Conforming						
Conforming	Not Required					
1.5 times Conforming	Not Required	Not Required	Not Required			

Ignition Resistant Construction

Defensible Space	Hazard Severity					
	Moderate		High		Extreme	
	Water Supply					
	Conforming	Non-Conforming	Conforming	Non-Conforming	Conforming	Non-Conforming
Non-Conforming	Required	Required	Required	Required	Required	
Conforming		Required	Required	Required	Required	Required
1.5 times Conforming				Required	Required	Required

Ignition Resistant Construction

Defensible Space	Hazard Severity					
	Moderate		High		Extreme	
	Water Supply					
	Conforming	Non-Conforming	Conforming	Non-Conforming	Conforming	Non-Conforming
Non-Conforming						Not Permitted
Conforming						
1.5 times Conforming						

Defensible Space Resource

Wildfire Risk Reduction Qualification for Texas Certified Arborists



Full description and list of arborists with the qualification:

<https://isatexas.com/for-the-public/wildfire-risk-assessment-qualified-arborists/>

Wildland-Urban Interface

WUI Code

Thank you

Mark Baker, Wildland-Urban Interface Coordinator

mark.baker2@austintexas.gov

512-974-6433

