

# Central Texas Clean Cities



Reducing Our  
Nation's Dependence  
on Foreign Oil  
Through Landscape  
Initiatives



U. S. Department of Energy



A stylized graphic of a city skyline with several blue rectangular buildings of varying heights. A large yellow sun is positioned behind the buildings, partially obscured by them. The background is a light blue gradient.

# The Clean Cities Mission

To advance the economic, environmental and energy security of the United States by supporting local practices that contribute to the petroleum reduction in the transportation sector.

# Stakeholders



Shaping Your Alternative Fuel Program

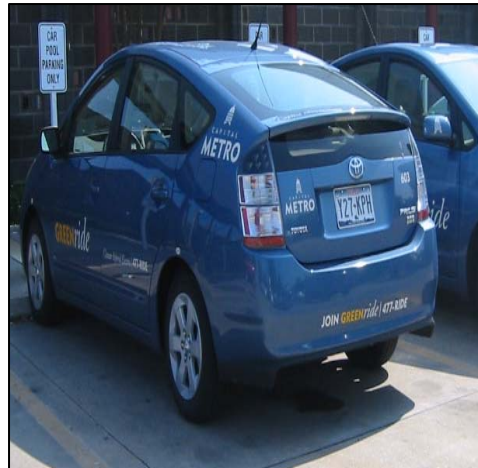


EQUIPMENT  
CENTER



# Petroleum Displacement Methods

- **Replace** petroleum with alternative fuels and low-level blends.
- **Reduce** by promoting energy efficiency in vehicles through advanced technologies and more fuel efficient vehicles.
- **Eliminate** by promoting idle reduction, greater use of mass transit, trip elimination, and other congestion mitigation approaches.





# Reported Alternative Fuel Use in Central Texas

- 2010 CTCC annual survey reported 3,166,396 gge reduced through the use of alternative fuels.
- 13,611 tons of greenhouse gas emissions reduced.
- 2,054,248 gasoline gallon equivalents of propane were used in vehicles,
- 6,824 gge of propane was used in landscape equipment.

A stylized graphic of a city skyline with several blue rectangular buildings of varying heights. A large yellow sun is positioned behind the buildings, partially obscured by them. The background is a light blue gradient.

# Propane in Texas

- Propane is easy on the environment.
- Propane is economical
- Propane is safe.
- There are many models of propane vehicles and mowers.
- Incentives are currently available through the Propane Council of Texas.
- There are multiple propane fueling options.



# Vehicle Availability





# Propane Mowers



## MOWING FOR A GREENER TOMORROW

Our commitment is to provide lawn care service to our customers using the most environmentally safe products without sacrificing quality. We can all make the environment a cleaner place for future generations. So breathe easier, be part of the difference and let A Kut Above raise the blade by mowing down emissions while serving your lawn care needs.

**Roberto and Sonya**  
A Kut Above



Residential & Commercial  
210-315-3390  
[www.AKutAboveMac.com](http://www.AKutAboveMac.com)

Photo by R&V Taylor





# Find a station in Texas

[www.afdc.energy.gov/afdc/locator/stations/](http://www.afdc.energy.gov/afdc/locator/stations/)





# McCoy's Lawn Equipment Super Store Open House

- March 2-3, 8501 Research Blvd., Austin
- Breakfast and lunch served both days
- Factory reps to show product and demo's
- Fleet pricing
- SCAG, V-Ride, Stihl, Echo, Shindaiwa, Honda, Snapper Pro, Ferris, Snapper, and more...
- And a full line of propane mowers

# Join Central Texas Clean Cities

Stacy Neef  
Central Texas Clean Cities  
505 Barton Springs Rd, 8<sup>th</sup> Fl  
Austin, Texas 78704  
512-974-7623  
[Stacy.neef@austintexas.gov](mailto:Stacy.neef@austintexas.gov)

