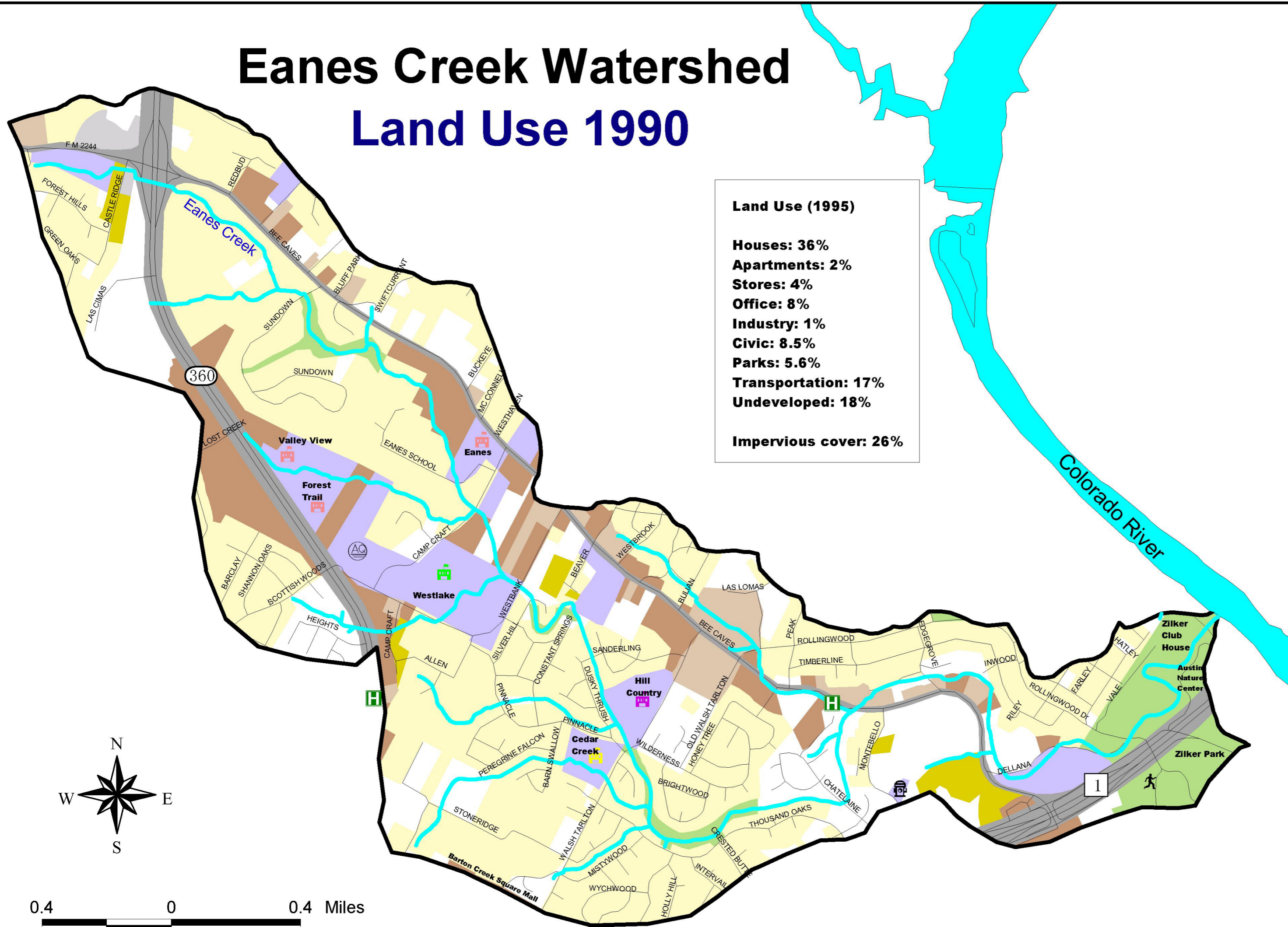


Eanes Creek Watershed Land Use 1990

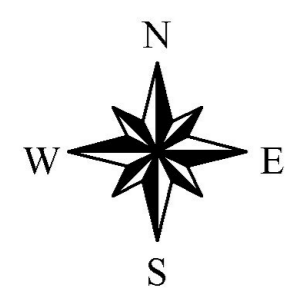


Land Use (1995)

Houses: 36%
Apartments: 2%
Stores: 4%
Office: 8%
Industry: 1%
Civic: 8.5%
Parks: 5.6%
Transportation: 17%
Undeveloped: 18%

Impervious cover: 26%

- Houses
- Parks
- Stores
- Schools & Community Centers
- Industry
- Apartments
- Office
- Transportation
- Undeveloped/Rural
- Eanes creek
- Streets
- Elementary School
- Westlake H.S.
- Hill Country M.S.
- Fire Station
- Austin 360 Reservoir
- Hospital
- Recreation Center



Watershed Protection & Development Review Department
 The City of Austin produced this map for the sole purpose of use as a work resource. The City of Austin does not warrant the maps &/or information regarding its accuracy or completeness. Reproduction is not permitted without permission from the City of Austin.
 Watershed Protection & Development Review Department