

Little Walnut Creek Flood Risk Reduction Project

Metric to Rutland

August, 2023



CAPITAL DELIVERY
SERVICES



AGENDA

- Welcome
- Capital Delivery Services Overview
- Little Walnut Creek Update
- Project Team
- Timeline
- Map of Construction Area
- Traffic Impacts
- Questions and Answers



CAPITAL DELIVERY
SERVICES



Capital Delivery Services

A City of Austin Department

Capital Delivery Services Department (CDS) plans, designs, builds, inspects, and delivers projects for City of Austin departments on-time and on-budget.



John Fletcher

Community Engagement Specialist



CAPITAL DELIVERY
SERVICES



Little Walnut Creek Update



CAPITAL DELIVERY
SERVICES



PROJECT TEAM



CAPITAL DELIVERY
SERVICES



- **Capital Delivery Services Program Consultant**
 - Larry Mendez
- **Capital Delivery Services Project Inspector**
 - Gustavo Castro
 - Rick Glosson
- **Watershed Protection Project Sponsor**
 - David Trujillo, P.E. CFM



PROJECT TEAM



CAPITAL DELIVERY
SERVICES



- **Austin Water Project Engineer B**

- David Mosqueda



- **Project Engineer/Consultant**

- Francisco Arce, BGE
- Heath Green, BGE

- **Contractor**

- Hardin Camp, Smith Contracting Co, Inc



ACCOMPLISHED WORK



CAPITAL DELIVERY
SERVICES



- Completed excavating the northeast corner of the pond.
- Installed rock at the south end outfall.
- Excavating for Bioretention swale and perforated pipe installation.
- Excavating for the pond outfall at the N/E corner
- Shaped pond slopes.



ANTICIPATED WORK



CAPITAL DELIVERY
SERVICES



Working in Detention Pond:

- Finishing the storm drain
- Excavation
- Placing concrete
- Installing Pipes for the bioretention line

PROJECT AREA



CAPITAL DELIVERY
SERVICES



One City, One Team, One Approach

TRAFFIC IMPACT

Phase 1: Pond to Parkfield

July 2023 – March 2024



CAPITAL DELIVERY
SERVICES



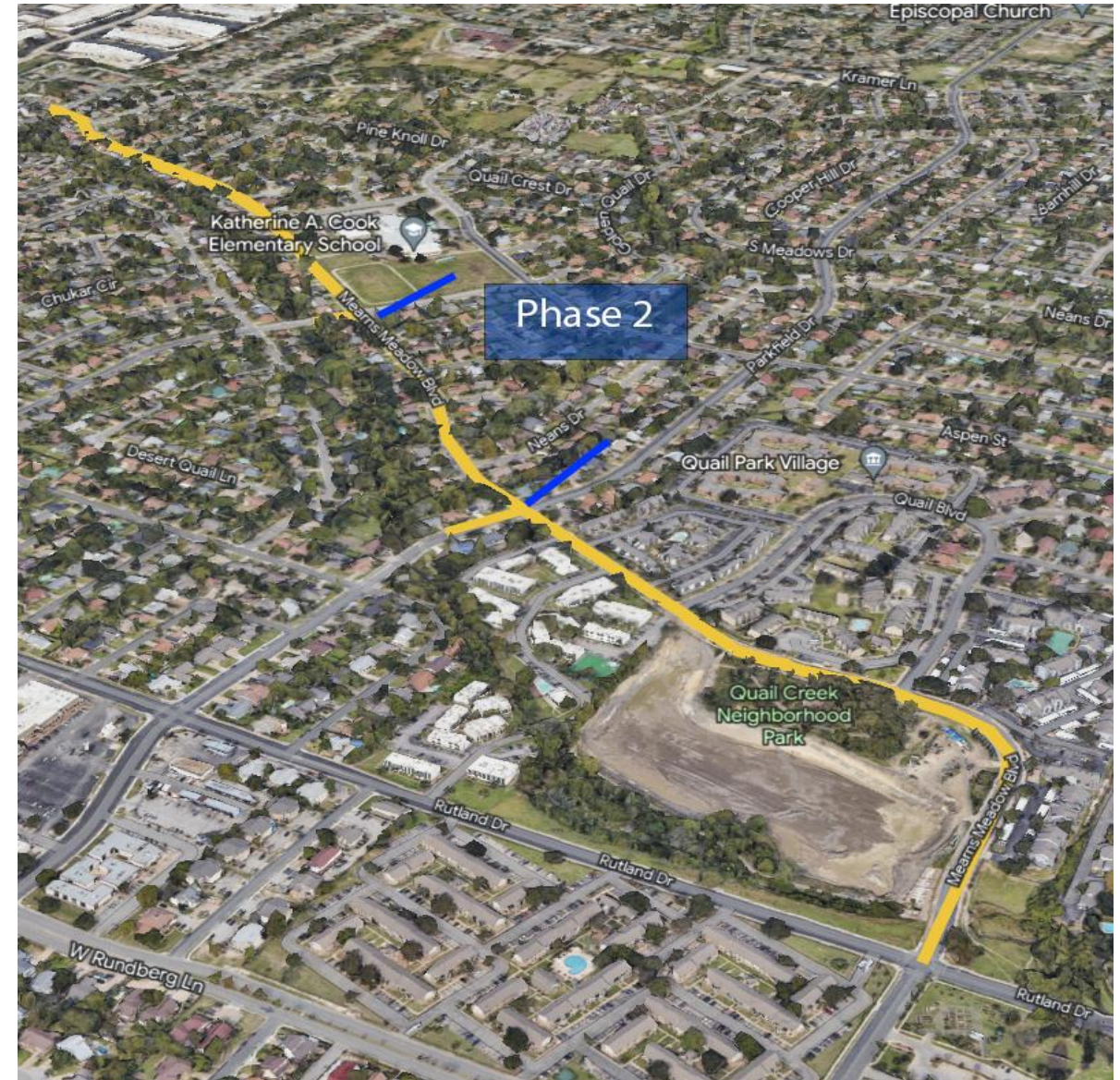
One City, One Team, One Approach



TRAFFIC IMPACT

Phase 2: Parkfield and Mountain Quail

March 2024 – December 2024



CAPITAL DELIVERY
SERVICES



One City, One Team, One Approach

TRAFFIC IMPACT

Phase 3: Mountain Quail to Quail Valley

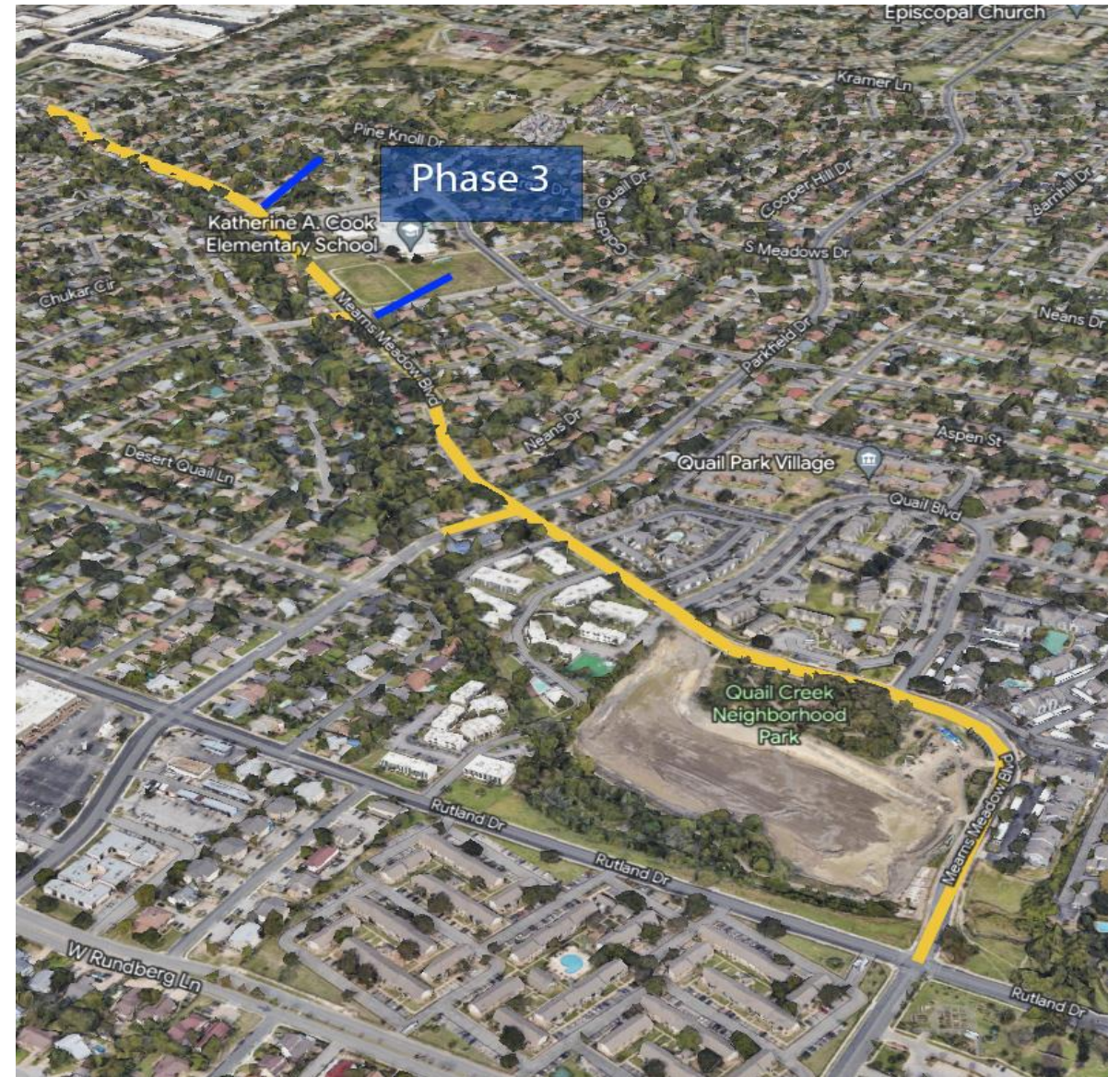
January 2025 – July 2025



CAPITAL DELIVERY
SERVICES



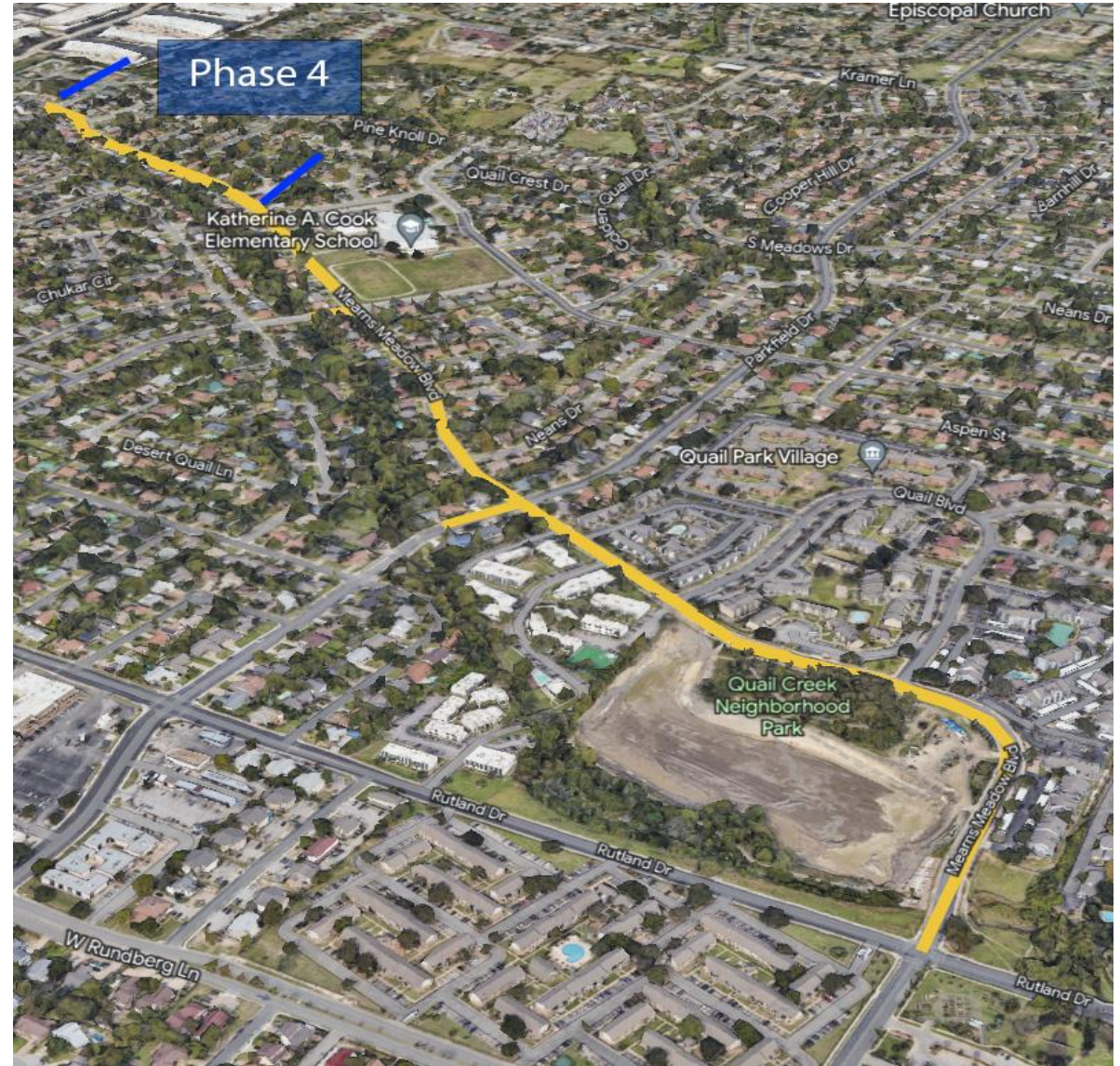
One City, One Team, One Approach



TRAFFIC IMPACT

Phase 4: Quail Valley to End/Boyer

August 2025 – January 2026



CAPITAL DELIVERY
SERVICES



One City, One Team, One Approach

WHAT TO EXPECT - ACTIVITY



CAPITAL DELIVERY
SERVICES



Digging

The contractor will use heavy equipment to dig a 20' deep trench along Mearns Meadow Blvd to install box culverts. The roads will be patched after they are installed. All roads will be repaved at the end of the project.

Crews will work in front of your property a number of times to complete each phase of the project, including excavation, pipe installation, temporary paving, testing, repairs, if necessary, and final paving.



WHAT TO EXPECT - TRAFFIC



CAPITAL DELIVERY
SERVICES



The City will reach out to Austin Resource Recovery to make arrangements for trash, recycling, and compost collection.

Traffic:

- Lane closures on Mearns Meadow between Metric and Rutland
- We will close lanes of traffic. You will always have access to your home - for brief periods, driveway access may be limited.
- Bus detours
- No parking in work areas (cars will be moved if parked in work area)

PROJECT COMMUNICATION & UPDATES



CAPITAL DELIVERY
SERVICES



- Website: austintexas.gov/littlewalnutcreek
- Community meetings
- Email updates
- On-site inspector
- Project Notices
- Email: Gustavo.castro@austintexas.gov

QUESTIONS + ANSWERS



CAPITAL DELIVERY
SERVICES

