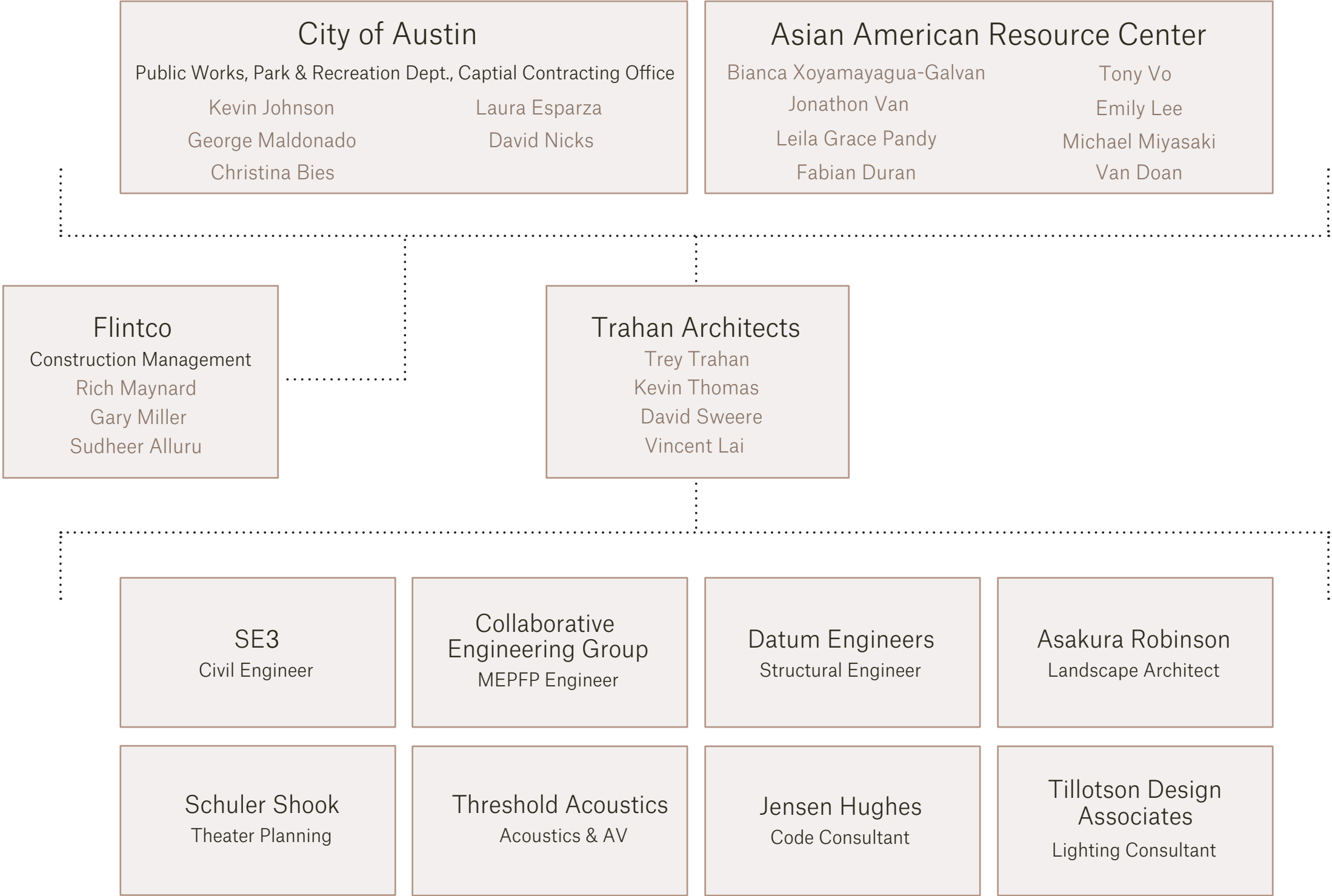


TRAHAN ARCHITECTS

Asian American Resource
Center
Phase II

Schematic Design Presentation
November 17, 2022

Project Team



Project Introduction & Goals

MISSION STATEMENT

The Asian American Resource Center's mission is to create a space of belonging and healing for Asian American communities in Austin and beyond. We do this through community Collaborations and partnerships; providing rental space; organizing cultural, educational, and health wellness programs and curating art and historical exhibitions. We lead with our values and our vision, so that our diverse communities are supported and connected.

VALUES

Diversity - Acknowledging our cultures and histories.

Solidarity - Recognizing our interconnectedness with ourselves and other communities of color.

Peace - Creating space for healing and unity.

Collaboration - Building relationships and co-creating.

Intergenerational - Connecting through stories.

Precedent Images

These images are a collection of precedent images collected by AARC staff as part of a design charrette on June 17, 2022- The images were requested by Trahan Architects in response to the following request:

Each team member to bring images that resonate with them regarding the following. We will ask each team member to discuss the images and reasons for selection and the relevance to this project. These images will form part of the engagement information obtained from programming.

- Asian Influence
- Values of the AARC
- An Architectural Project
- Local/Austin/Texas Influence

The design categories were established in collaboration AARC and PARD staff to find common elements that weaved through the images and how they could influence the project design.

Grandeur
Gestures into the Landscape



Flow
Connections Between Spaces and Peo-



Contemporary Explorations



Contemporary Explorations



Transparency
Light, Shadow, and Visual Connections



Harmony with Nature
Landscape



Tex-Asian (Interconnectedness)
Comparing Asian, American, and Asian American Vernacular



Native Landscape



PROJECT DESIGN GUIDELINES

Grandeur - Grand Gestures to the Landscape, Entry, + Public Areas

Iconic - Prominence as the Campus's recognizable Building + AARC Identity

Flow - Connection Between Spaces, People and Landscape

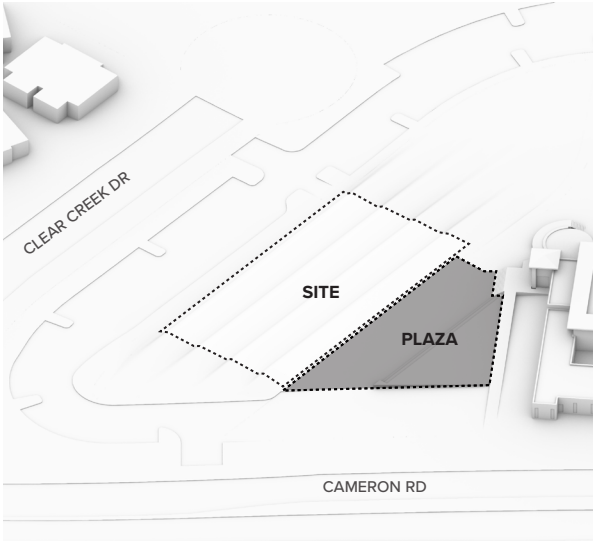
Transparency - Visible and physical connections between Interior to Exterior Spaces

Tex-Asian (Interconnectedness) - Intersection of Asian + Local Influences

Harmony with Nature - Commitment to social and environmental sustainability.
Improve people's well-being and make life more enjoyable.

Massing

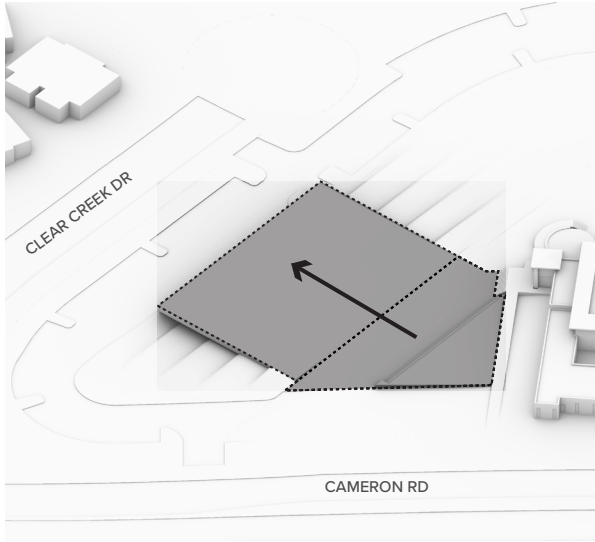
Conceptual Design



1

Terrace the Site

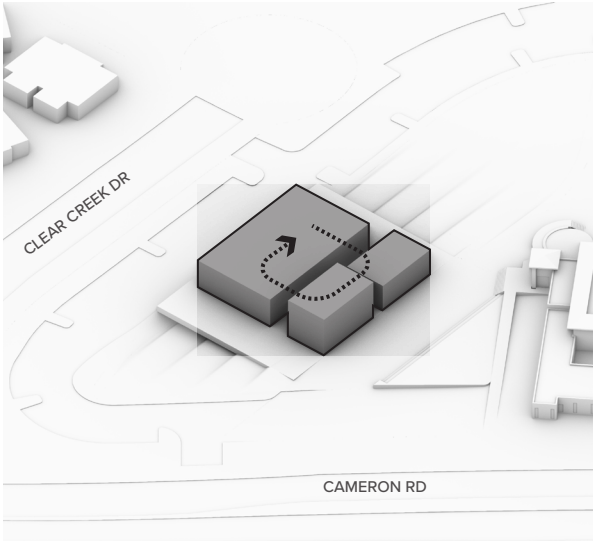
Undulating, terraced topography influenced by Asian Agricultural Vernacular



2

Extend the Plaza

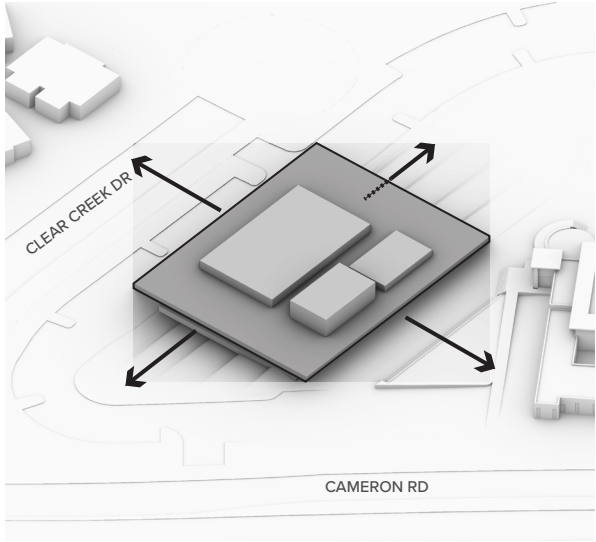
Extending the public platform for the site to make the building accessible



3

A Market of Cultural Activity

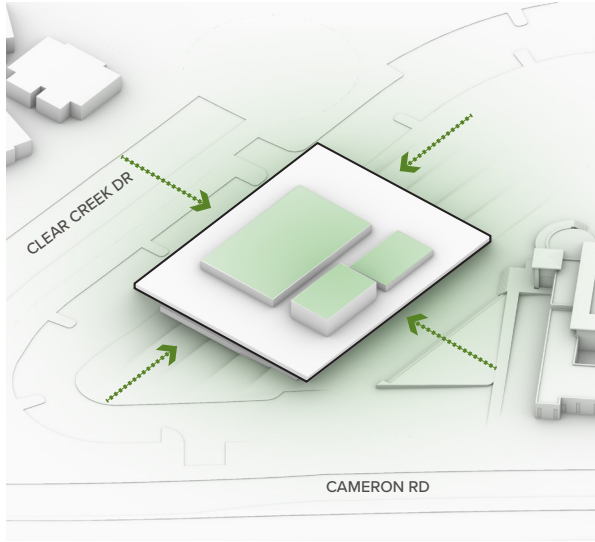
Creating a cultural market place to experience a variety of arts and culture, but also to foster a community and celebrate culture with friends and family.



4

Unify under a canopy, creating a wrap-around porch

Referencing the first asian-american settlements and local texas vernacular to create a unifying, protected outdoor public space around the building.



5

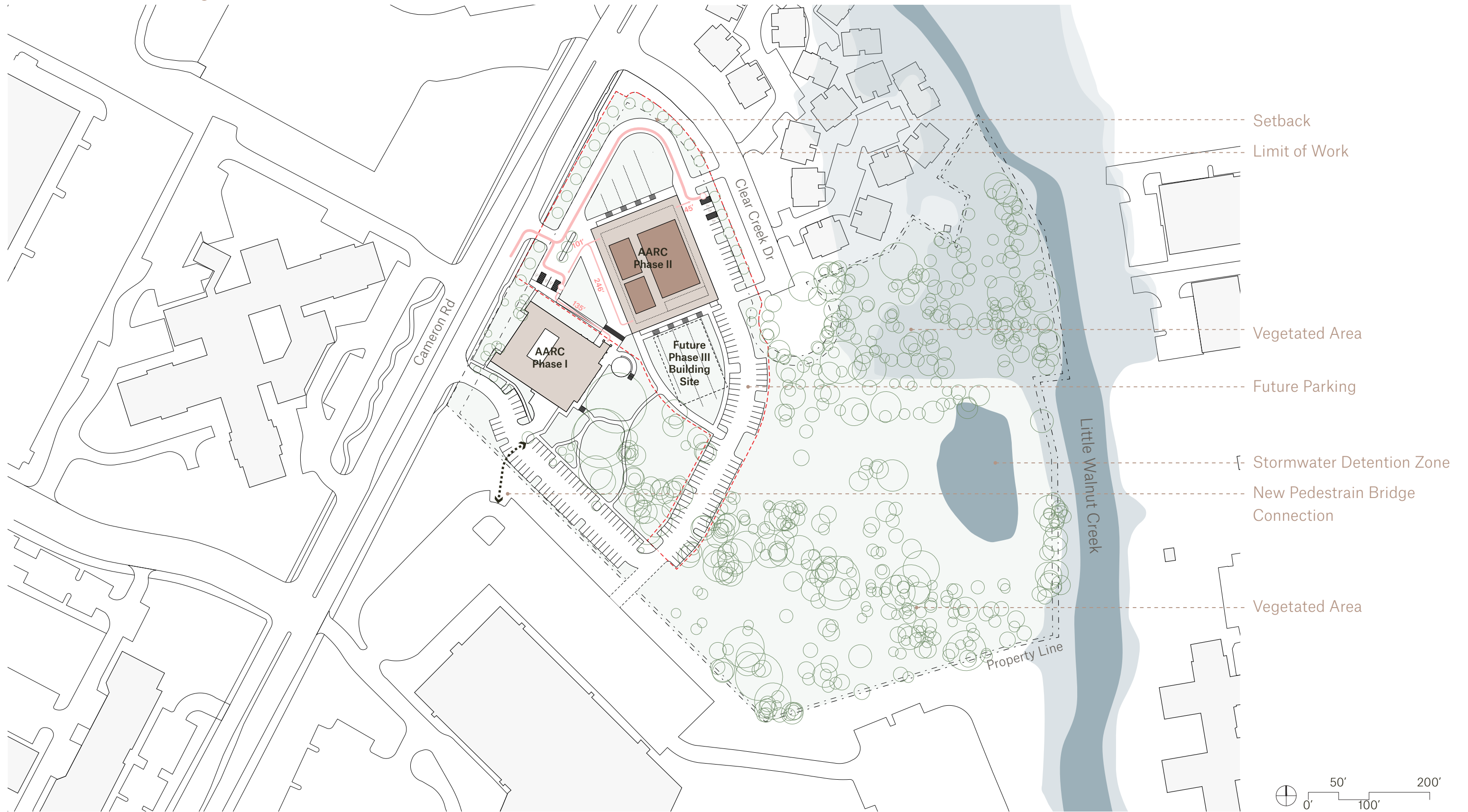
Harmonize with Nature

From nature, we come, and to nature we belong. To truly preserve, connect and give back to it, we must first discover it. Experiencing the inherent rhythm of nature - the sunrises, and passing of the moon - strive to enhance our sense of surroundings, identity and relationship to the environment.

Site Design

Site Plan

Future Phase III Building Site



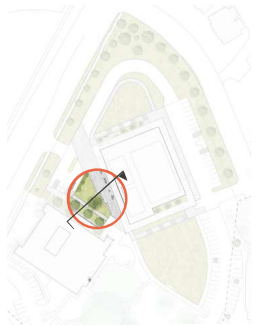
Site Design

Aerial Image - Phase II

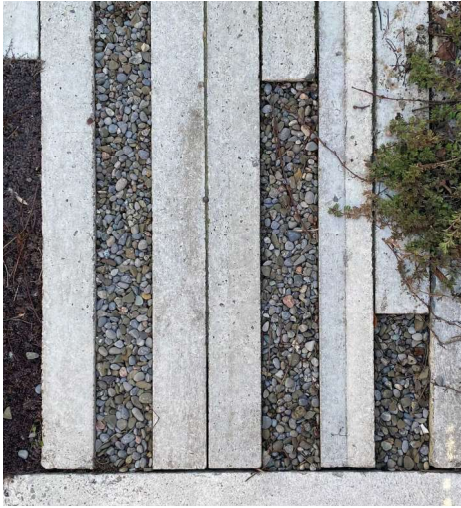


Landscape Strategy

Performance Plaza

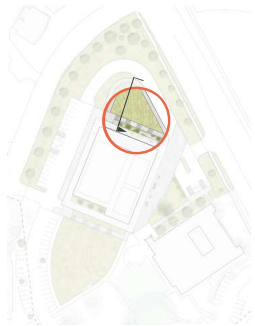


Character Imagery

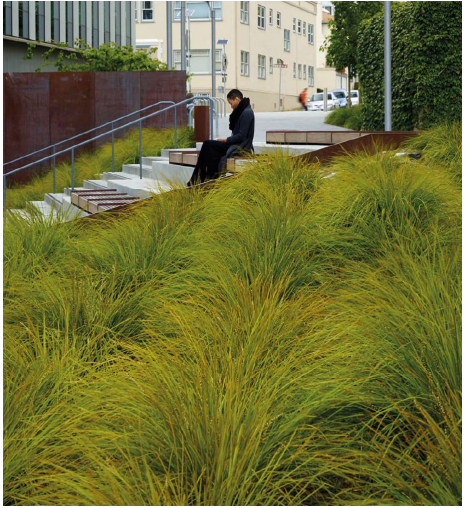


Landscape Strategy

North Lawn & Courtyard



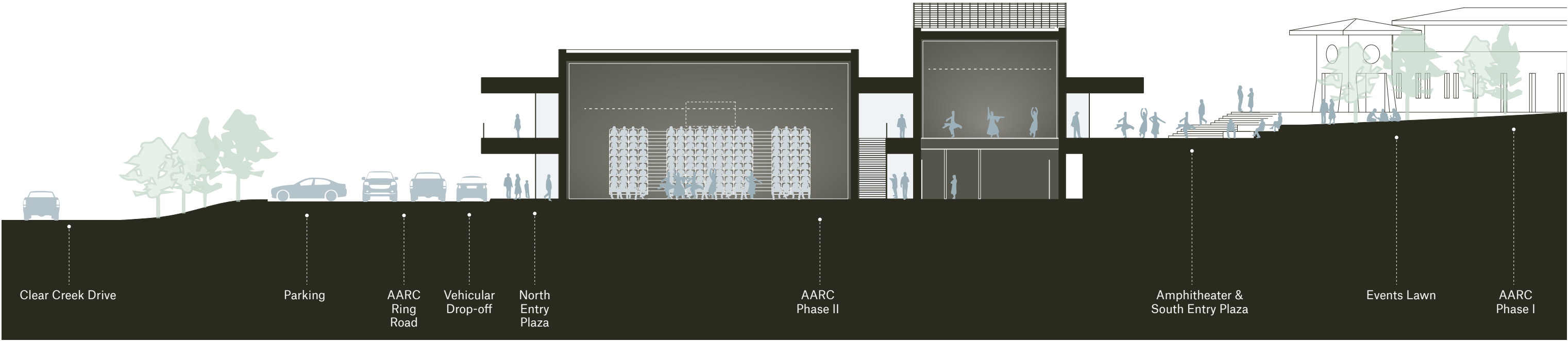
Character Imagery



Building Plans

Site

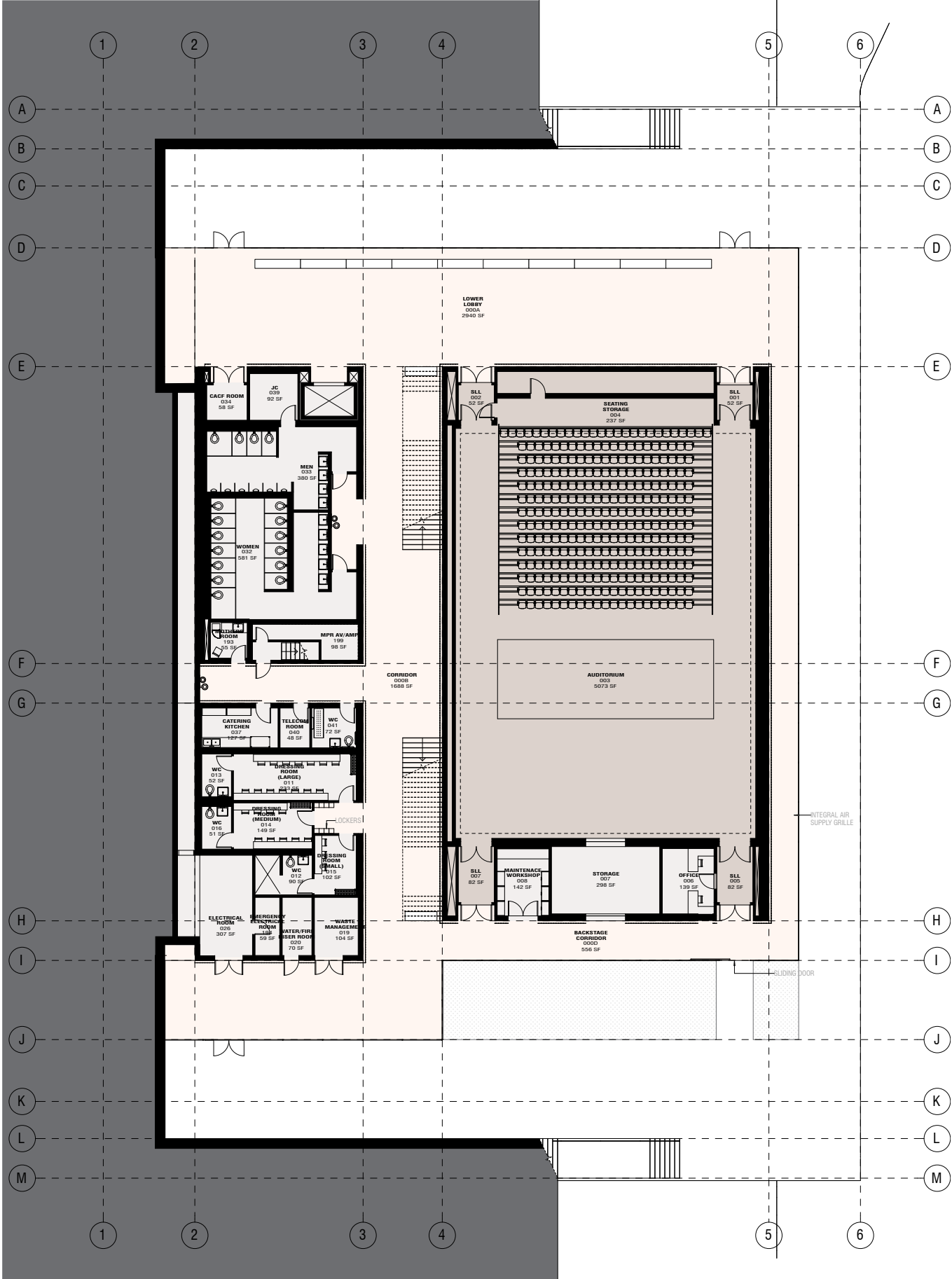
Building Height - Section



Building Plans

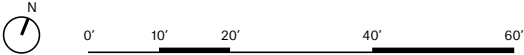
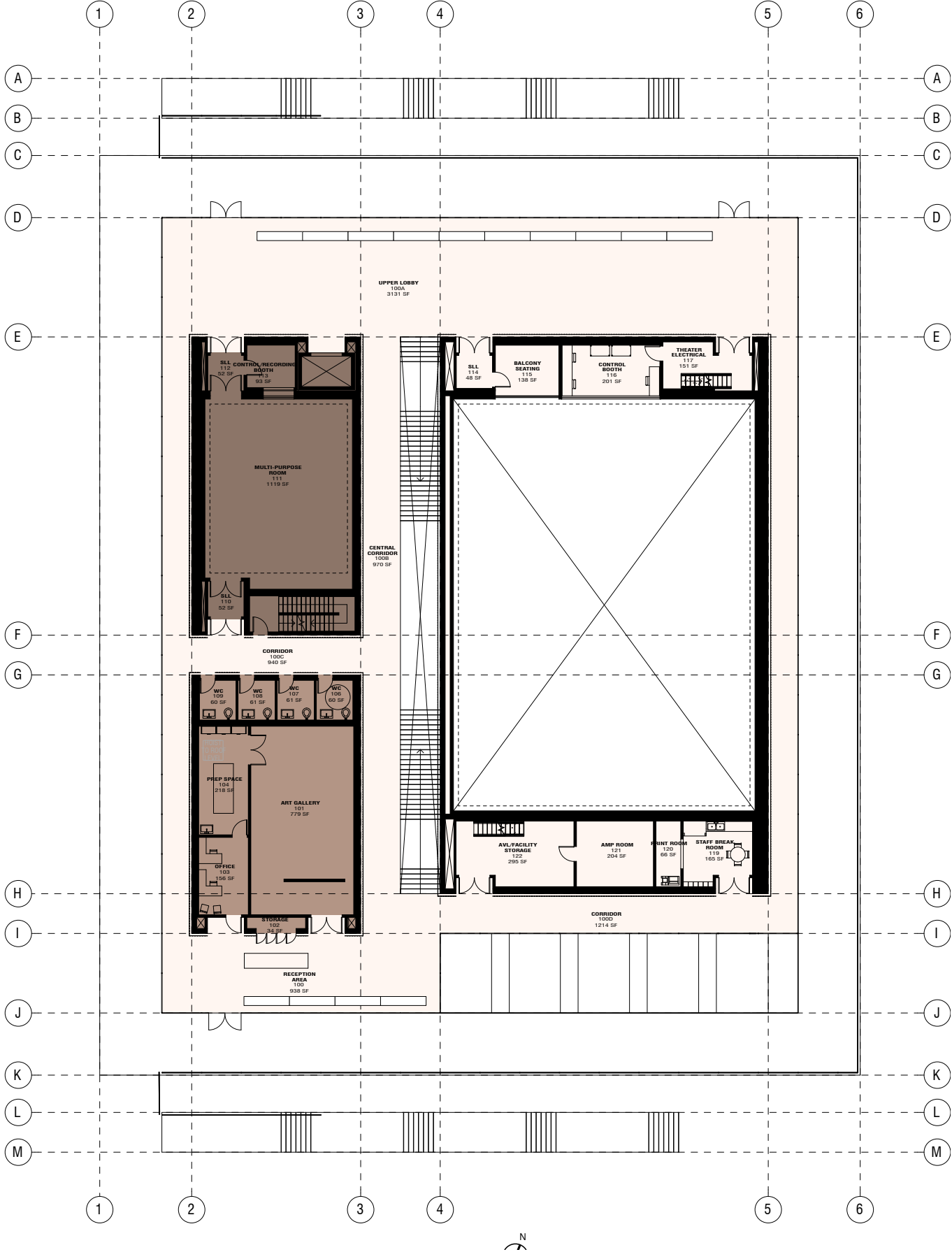
Level 0

Finish Floor Elevation = 606'



Building Plans

Level 1
 Finish Floor Elevation = 620'



Massing + Material

Meaning of Fire in Asian Cultures

Lantern



Meaning of Fire in Texas

A Place of Gathering, Sharing Dreams + Stories, Hearth + Home



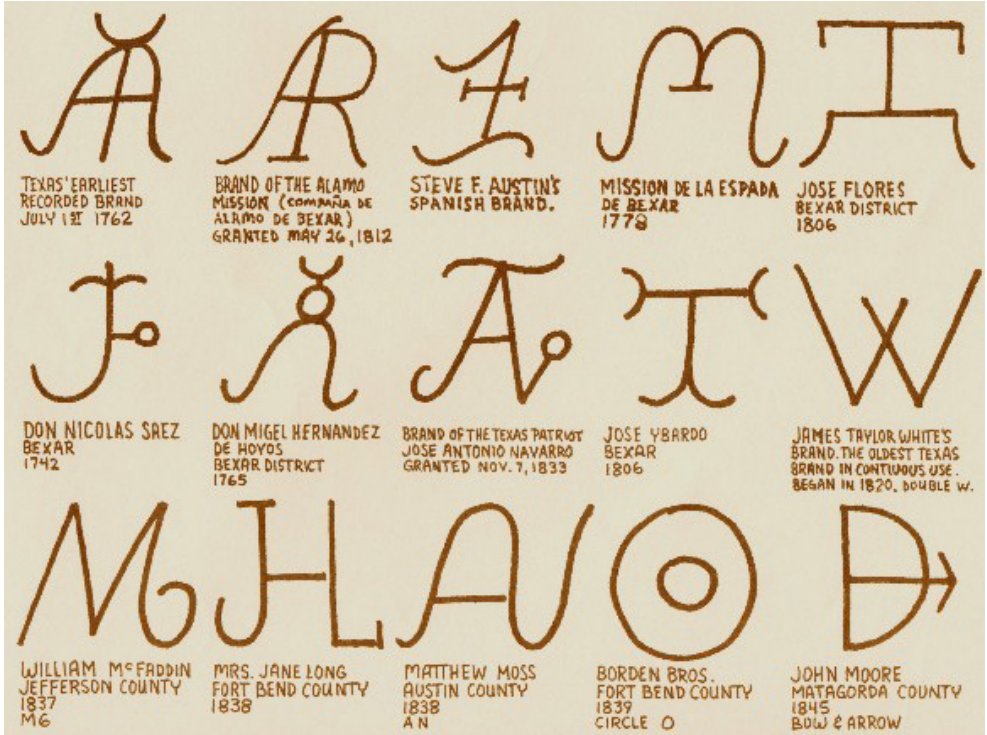
Meaning of Fire in Texas

Smoking Brisket



Meaning of Fire in Texas

Ranching + Branding



Meaning of Fire in Asian Cultures

Shou Sugi Ban



Exterior View - Shou Sugi Ban

View from Cameron Road



Exterior View - Shou Sugi Ban

View from Northeast Corner



Exterior View - Shou Sugi Ban

View of Plaza between Phase I + Phase II



Exterior View - Shou Sugi Ban

View from South Lawn



Video

TRAHAN ARCHITECTS

NEW ORLEANS / NEW YORK

CONTACT

Kevin Thomas

kthomas@trahanarchitects.com

646 661 6633